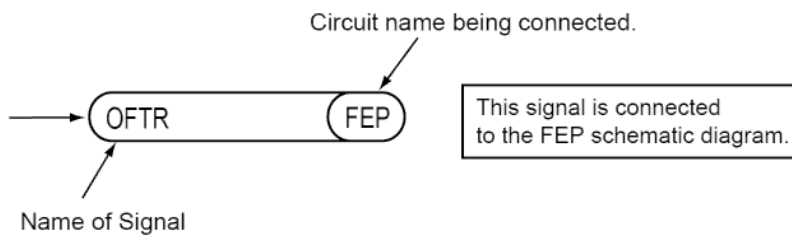

Model No. : HC-V110 Schematic Diagram Note

IMPORTANT SAFETY NOTICE:

COMPONENTS IDENTIFIED WITH THE MARK ⚠ HAVE THE SPECIAL CHARACTERISTICS FOR SAFETY. WHEN REPLACING ANY OF THESE COMPONENTS USE ONLY THE SAME TYPE.

1. Although reference number of the parts is indicated on the P.C.B. drawing and/or schematic diagrams, it is NOT mounted on the P.C.B. when it is displayed with "\$" mark.
2. It is only the "Test Round" and no terminal (Pin) is available on the P.C.B. when the TP (Test Point) indicated as "●" mark.
3. Use the parts number indicated on the Replacement Parts List .
4. Indication on Schematic diagrams:



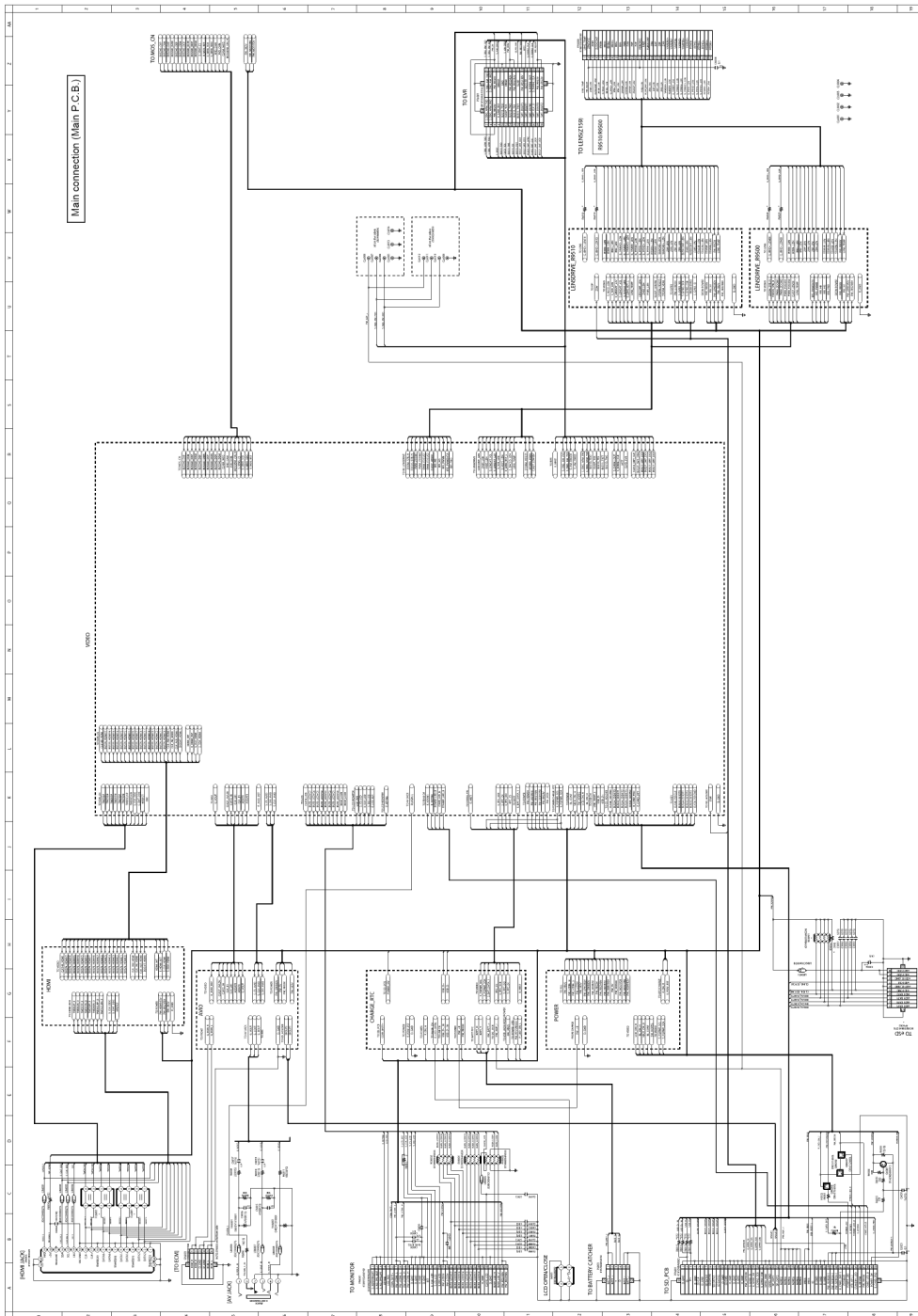
5. It might be taking time for display and/or access of the Schematic Diagrams & P. C. B having the heavy data volume.

Model No. : HC-V110 Parts List Note

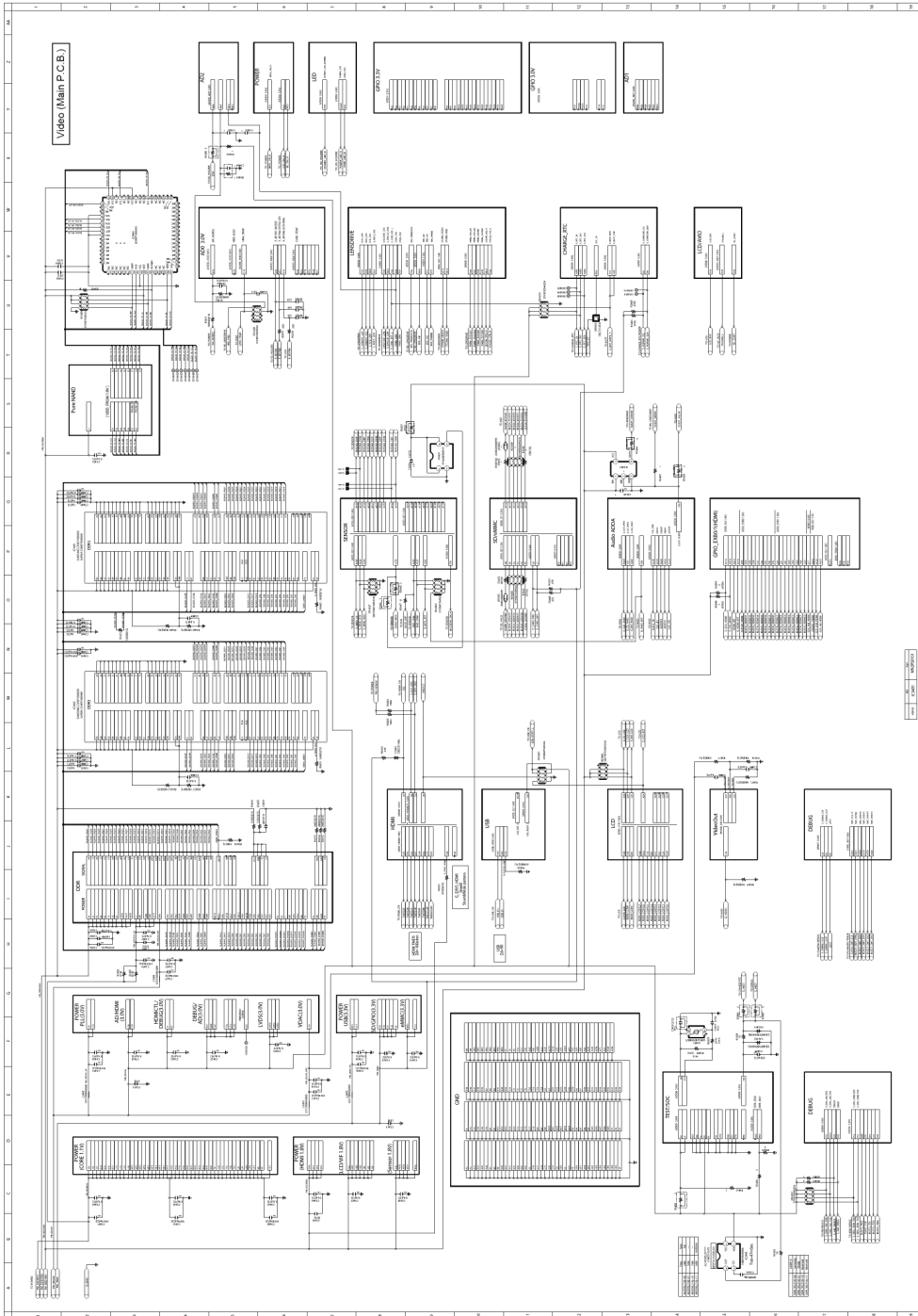
- Note:
- 1.* Be sure to make your orders of replacement parts according to this list.
 2. IMPORTANT SAFETY NOTICE
Components identified with the mark \triangle have the special characteristics for safety.
When replacing any of these components, use only the same type.
 3. Unless otherwise specified,
All resistors are in OHMS, K=1,000 OHMS. All capacitors are in MICRO-FARADS (uf), P=uuF.
 4. The marking (RTL) indicates the retention time is limited for this item. After the discontinuation of this assembly in production, it will no longer be available.

E.S.D. standards for Electrostatically Sensitive Devices, refer to “PREVENTION OF ELECTROSTATIC DISCHARGE (ESD) TO ELECTROSTATICALLY SENSITIVE (ES) DEVICES” section.

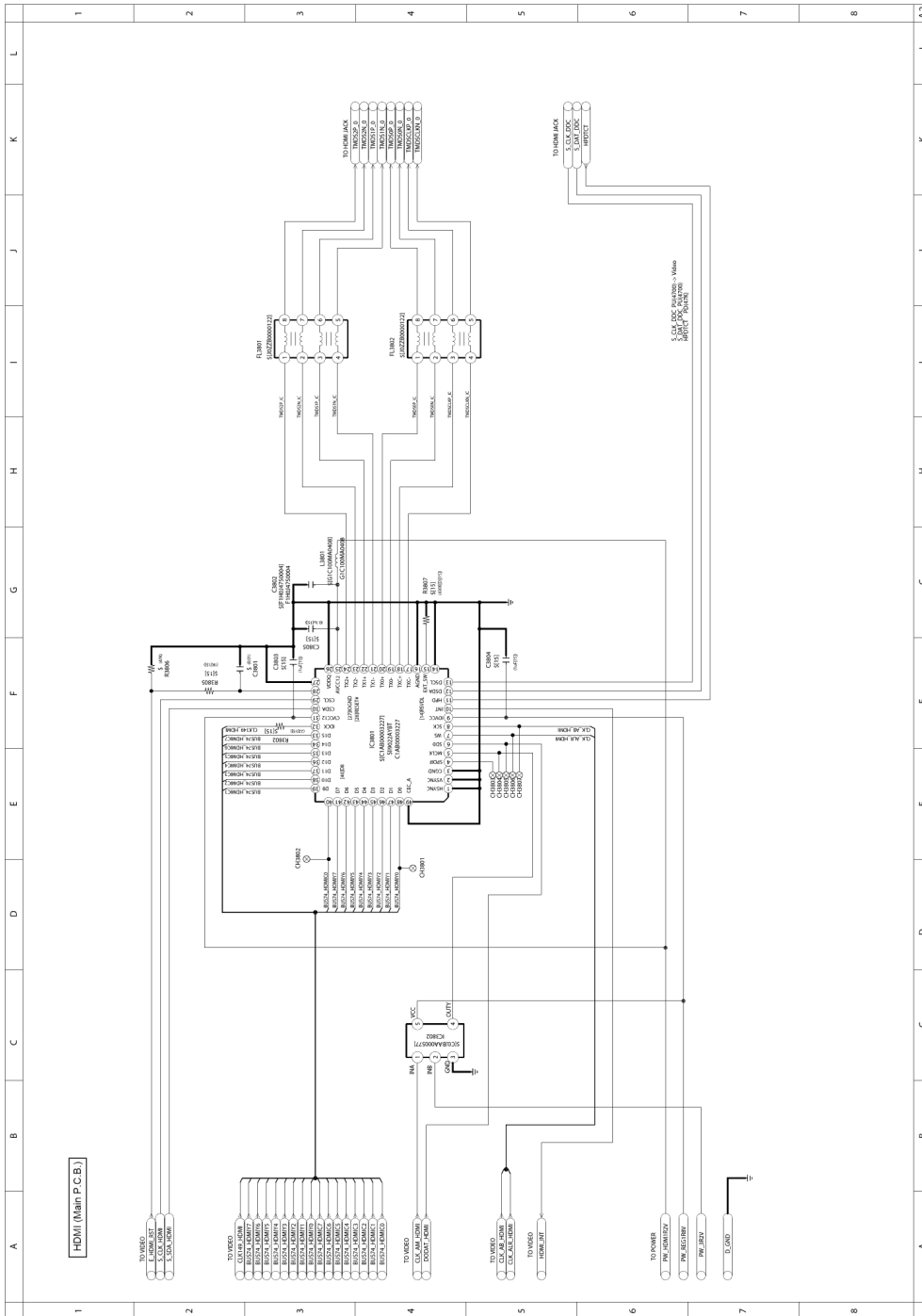
Model No. : HC-V110 Main connection (Main P.C.B.)



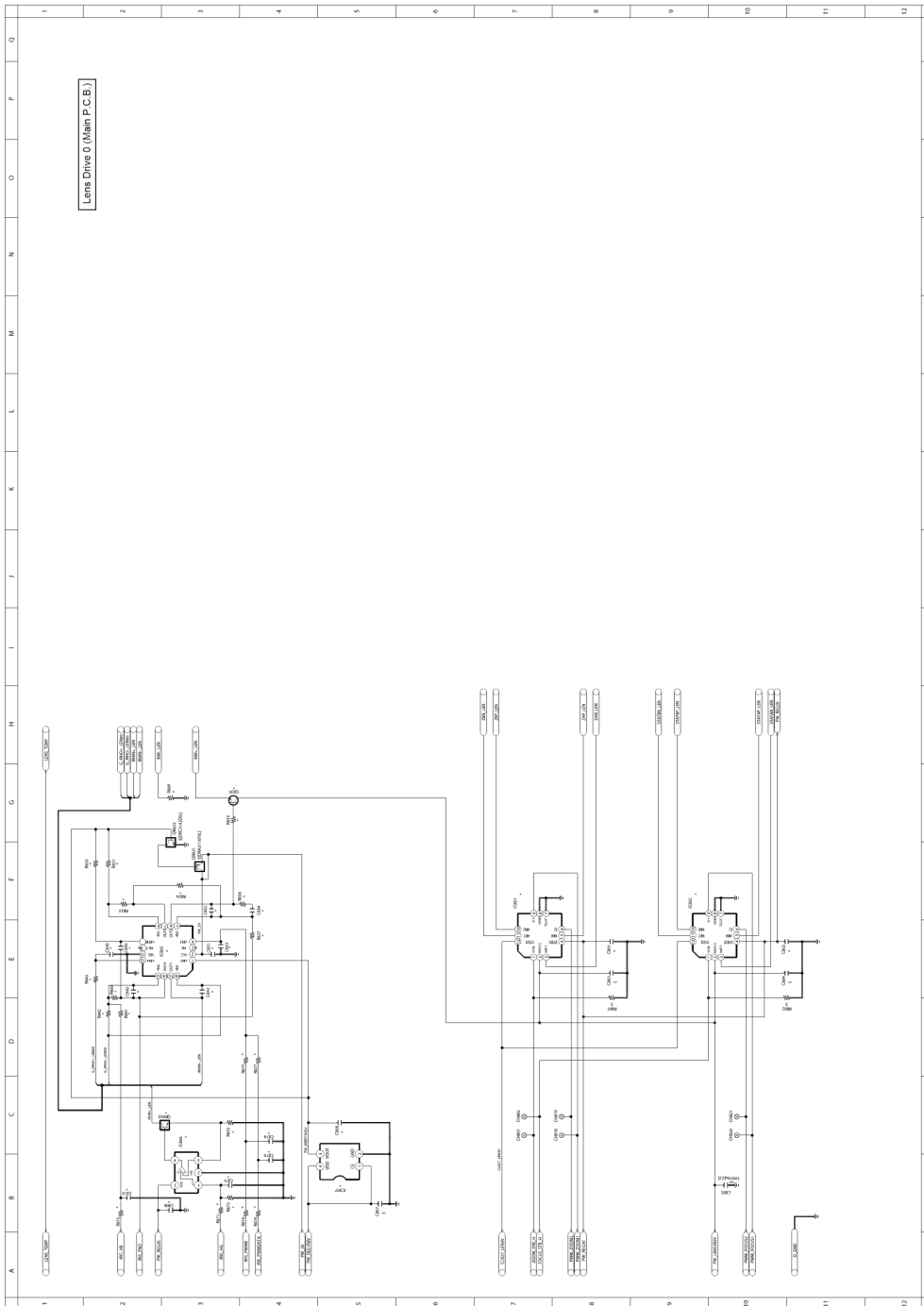
Model No. : HC-V110 Video (Main P.C.B.)



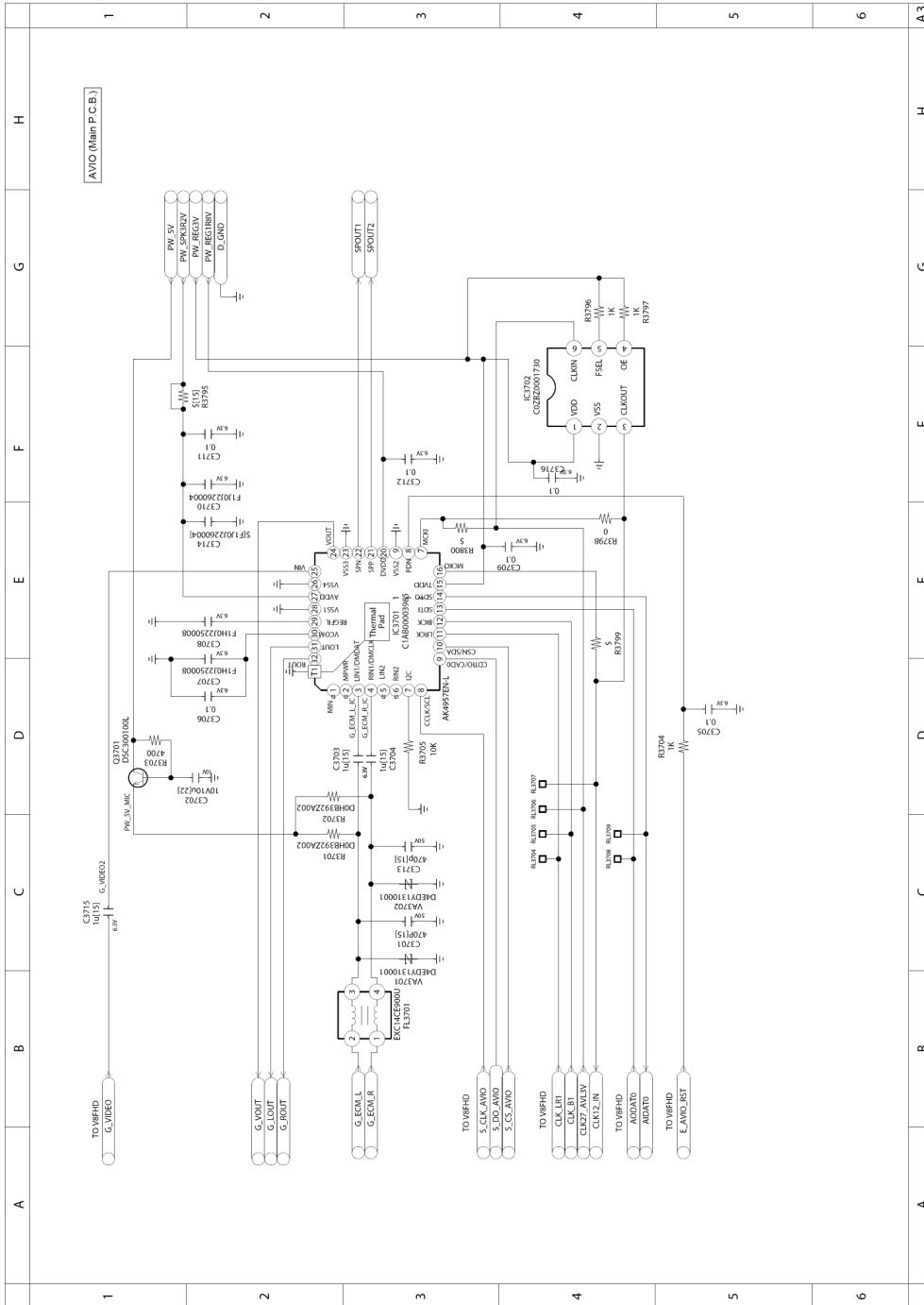
Model No. : HC-V110 HDMI (Main P.C.B.)



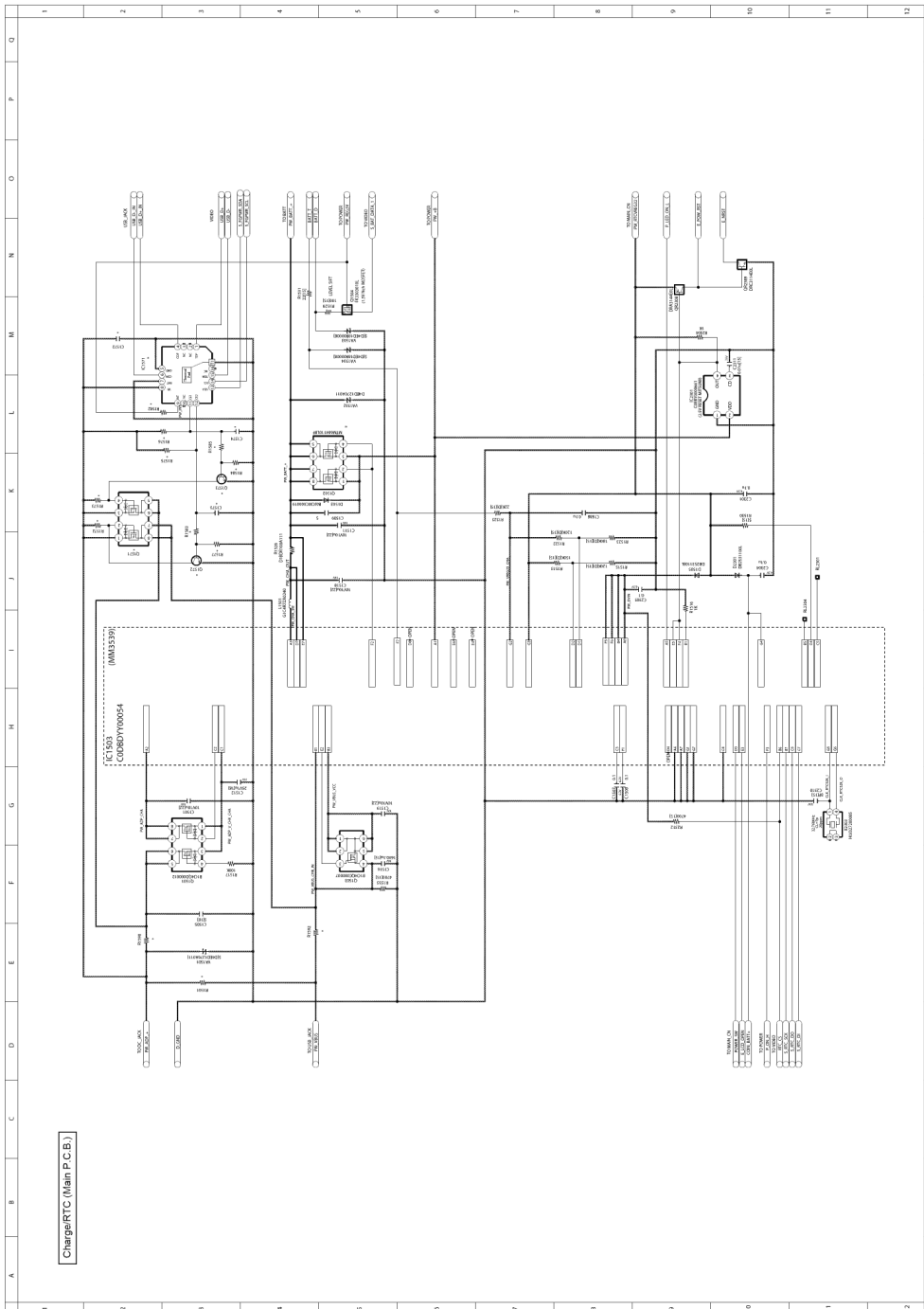
Model No. : HC-V110 Lens Drive 0 (Main P.C.B.)



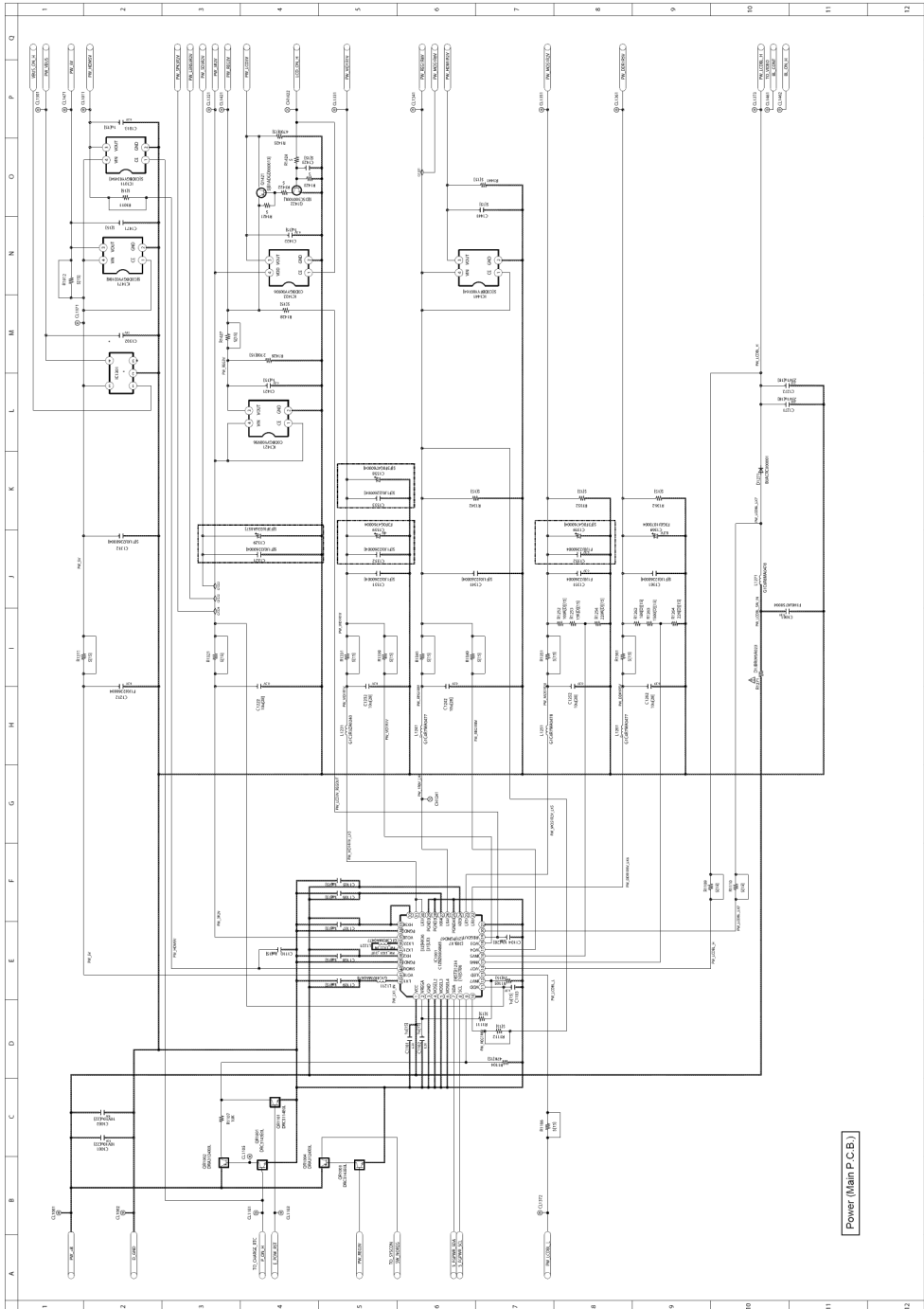
Model No. : HC-V110 AVIO (Main P.C.B.)



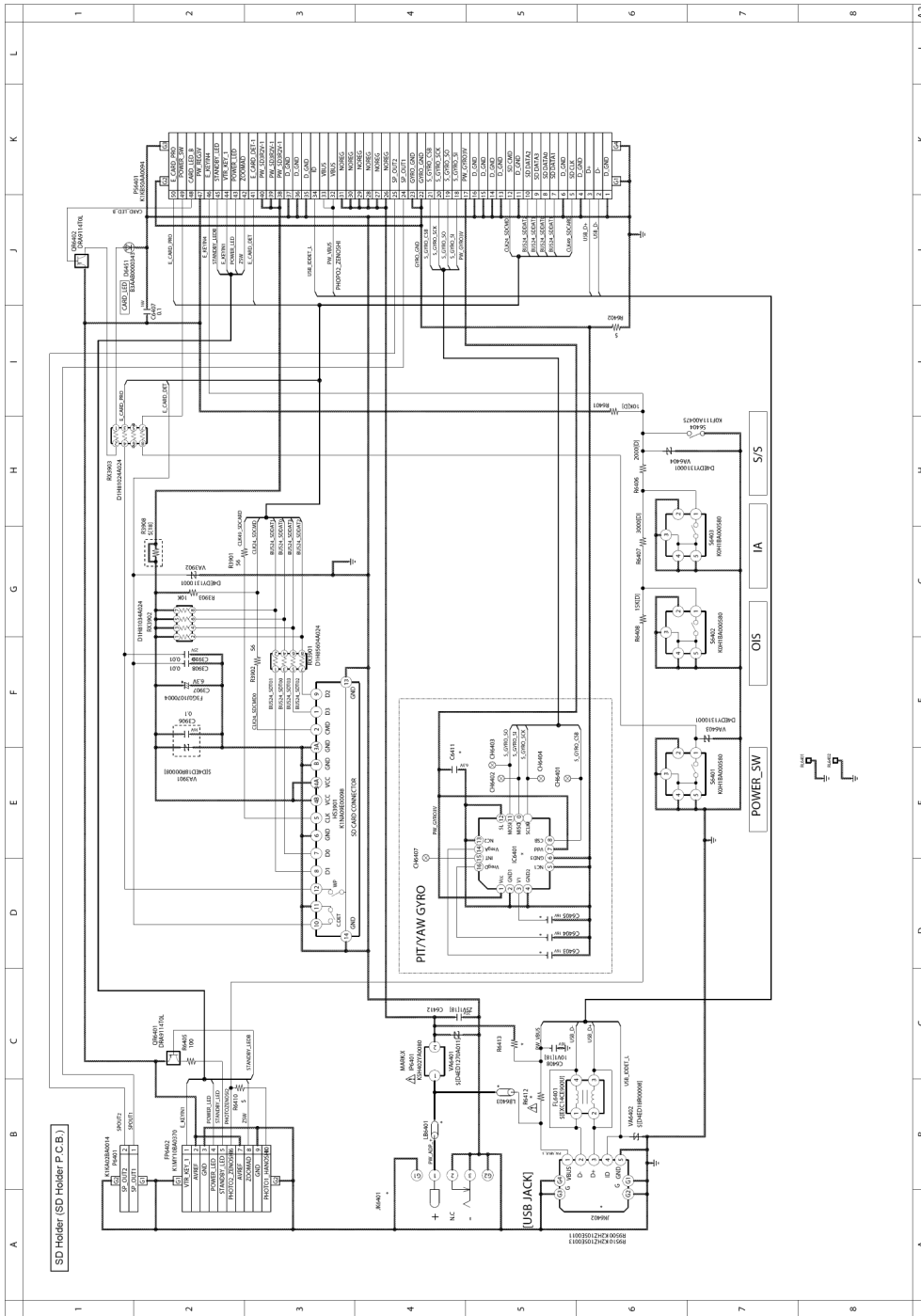
Model No. : HC-V110 Charge/RTC (Main P.C.B.)



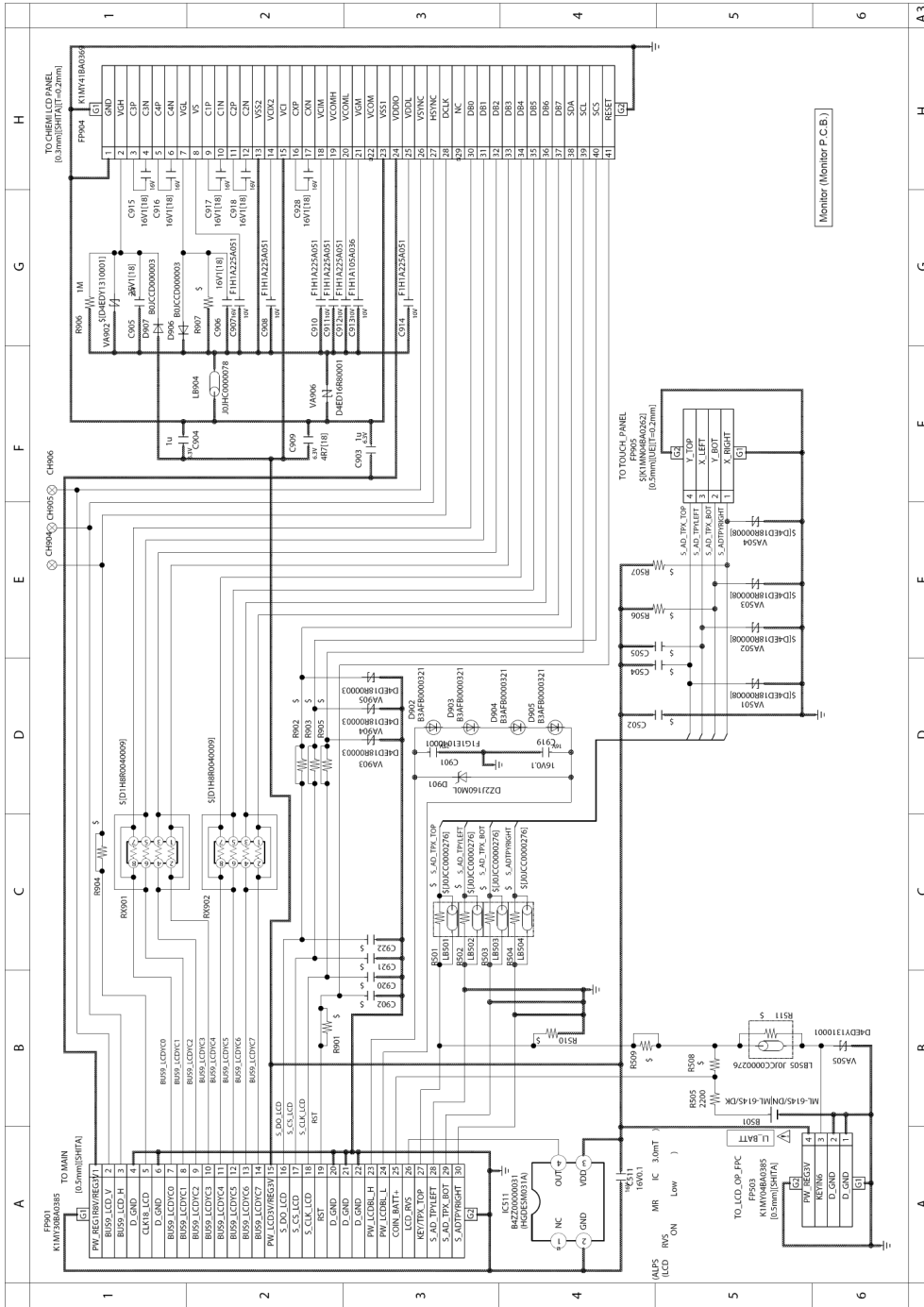
Model No. : HC-V110 Power (Main P.C.B.)



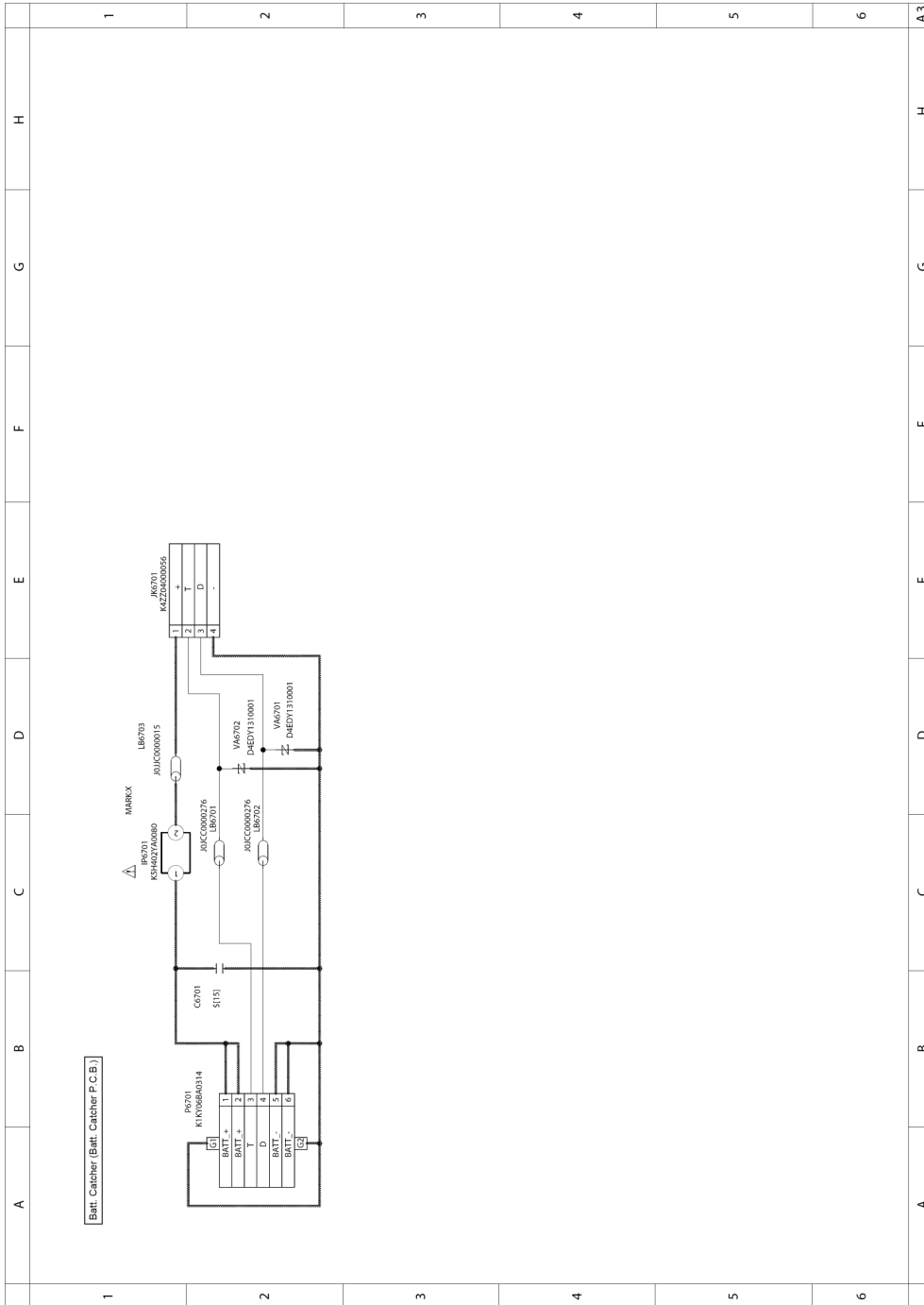
Model No. : HC-V110 SD Holder (SD Holder P.C.B.)



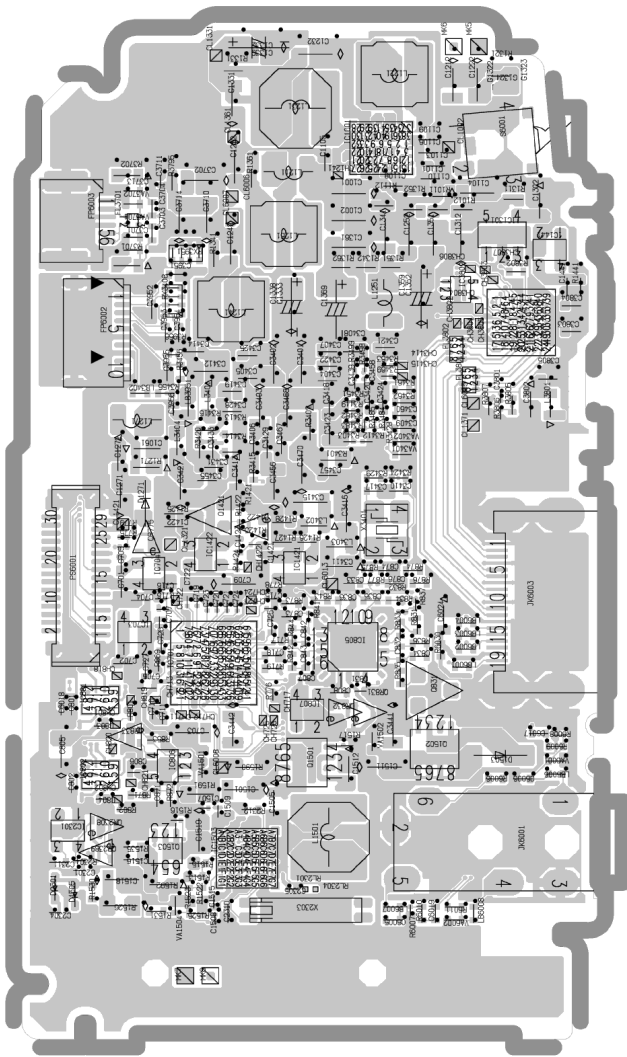
Model No. : HC-V110 Monitor (Monitor P.C.B.)



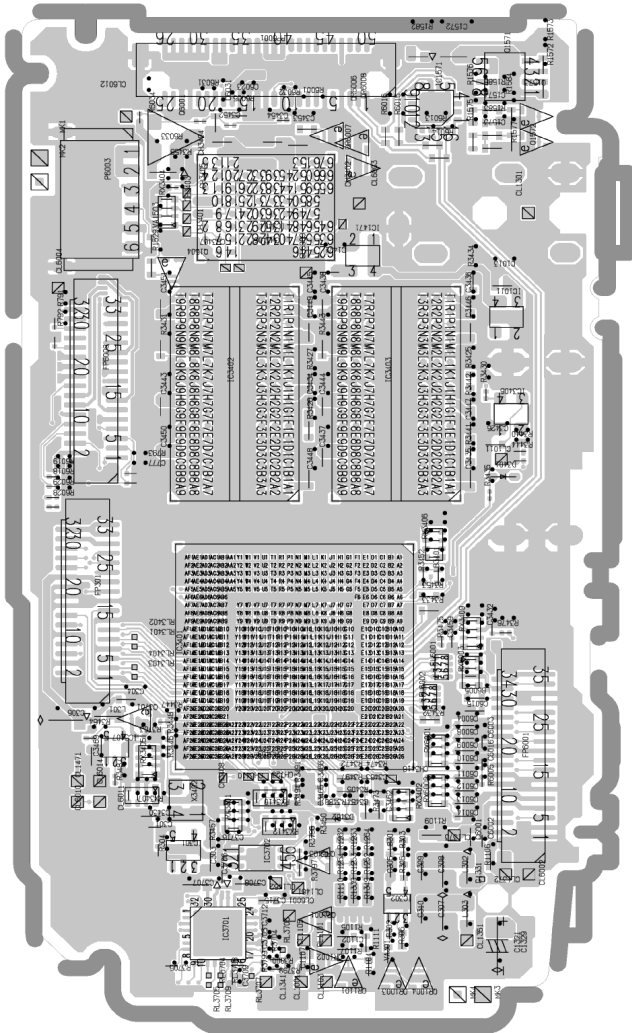
Model No. : HC-V110 Batt. Catcher (Batt. Catcher P.C.B.)



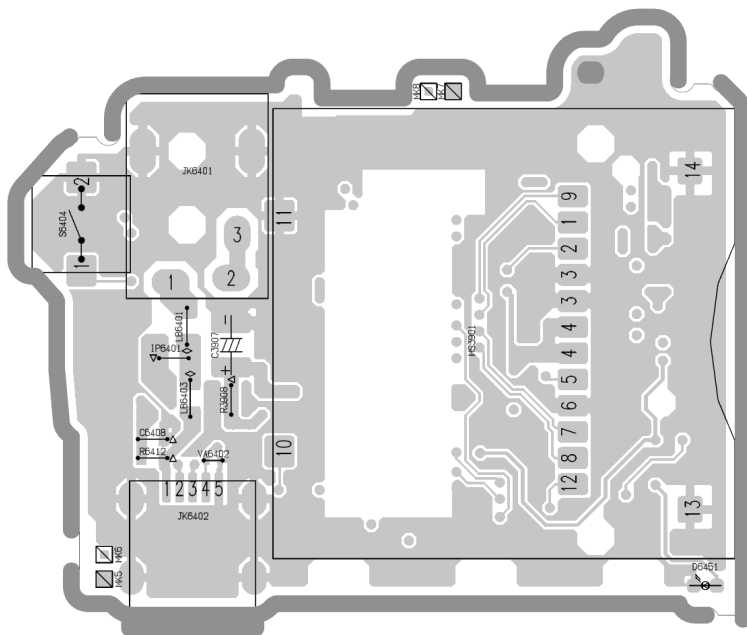
Model No. : HC-V110 Main P.C.B.(Component Side)



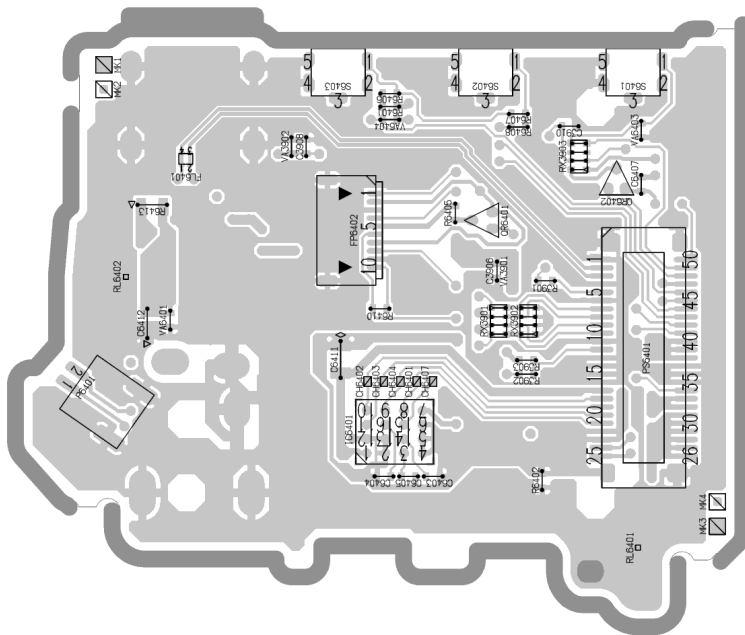
Model No. : HC-V110 Main P.C.B.(Foil Side)



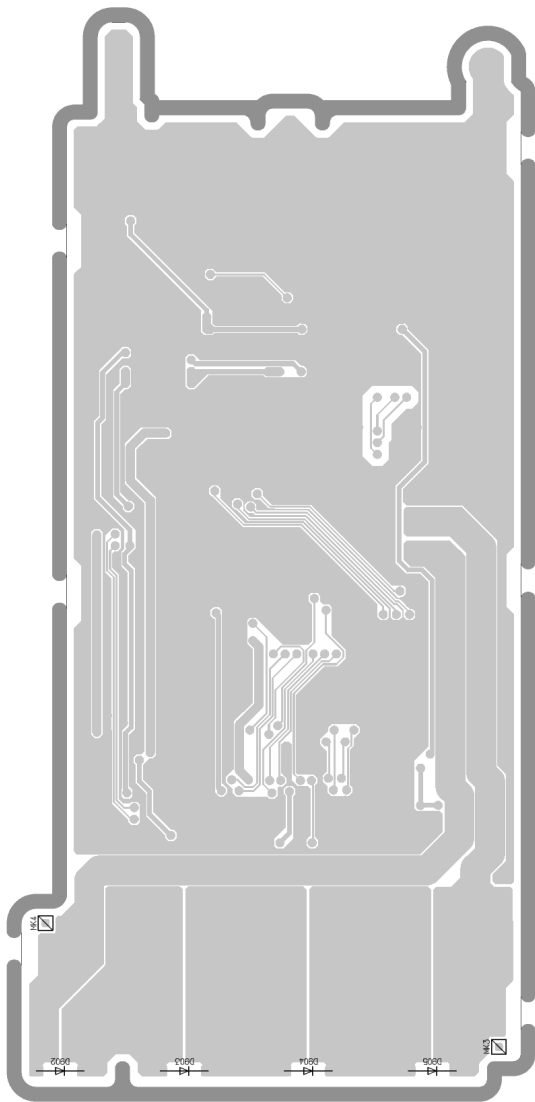
Model No. : HC-V110 SD Holder P.C.B.(Component Side)



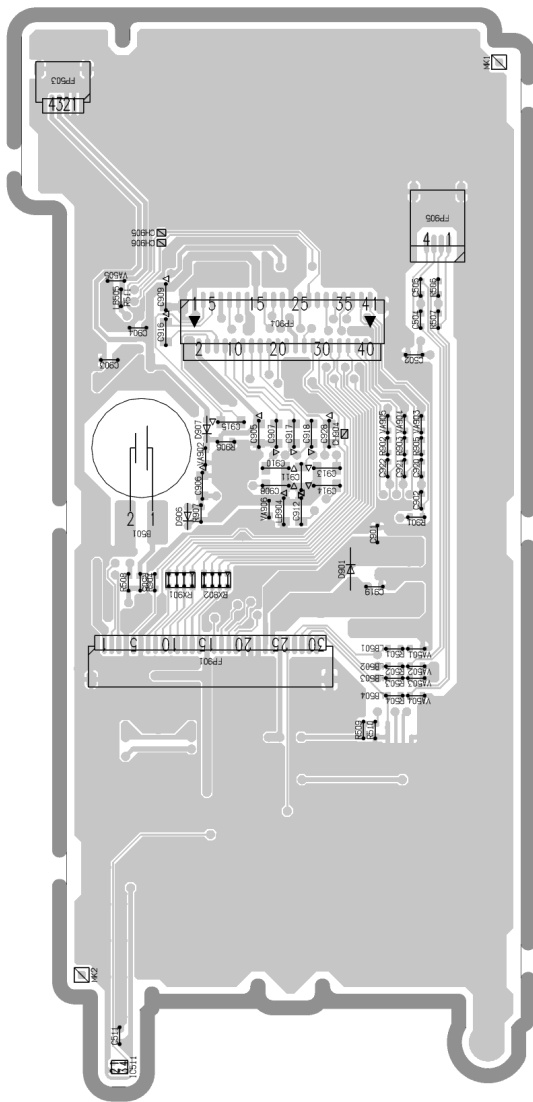
Model No. : HC-V110 SD Holder P.C.B.(Foil Side)



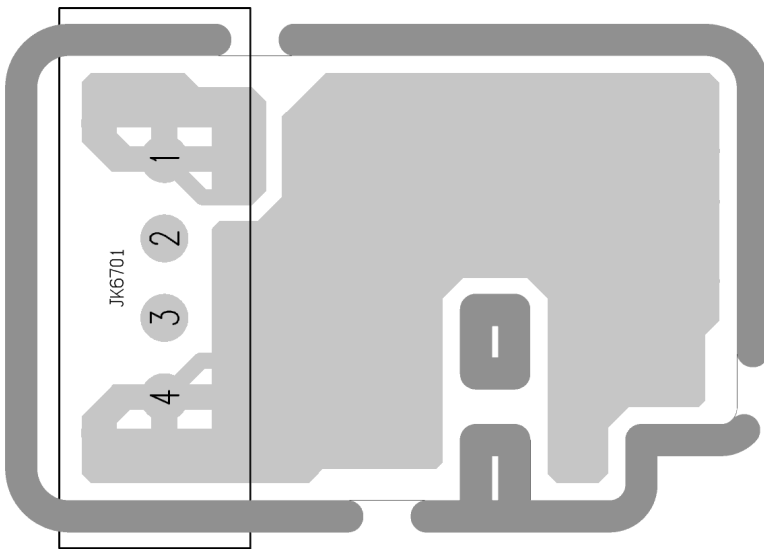
Model No. : HC-V110 Monitor P.C.B.(Component Side)



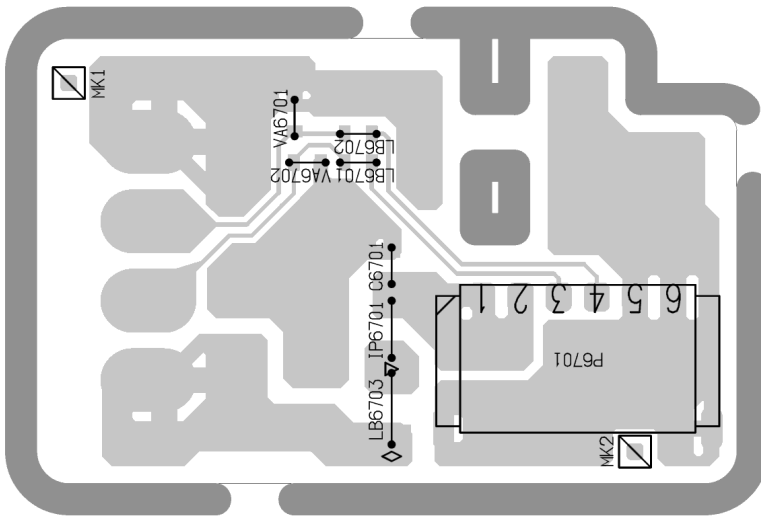
Model No. : HC-V110 Monitor P.C.B.(Foil Side)




Model No. : HC-V110 Batt. Catcher P.C.B.(Component Side)



Model No. : HC-V110 Batt. Catcher P.C.B.(Foil Side)



Model No. : HC-V110 Parts List

Change	Safety	Ref. No.	Part No.	Part Name & Description	Q'ty	Remarks
		B501	ML-614S/DN	BUTTON BATTERY	1	
		C303	F1G0J1050007	C.CAPACITOR CH 6.3V 1U	1	
		C304	F1G0J1050007	C.CAPACITOR CH 6.3V 1U	1	
		C305	F1L0J1040001	C.CAPACITOR CH 6.3V 0.1U	1	
		C309	F1G0J1050007	C.CAPACITOR CH 6.3V 1U	1	
		C310	F1G0J1050007	C.CAPACITOR CH 6.3V 1U	1	
		C511	F1G1C104A077	C.CAPACITOR CH 16V 0.1U	1	
		C703	F1J1A106A043	C.CAPACITOR CH 10V 10U	1	
		C801	F1L0J1040001	C.CAPACITOR CH 6.3V 0.1U	1	
		C802	F1L0J1040001	C.CAPACITOR CH 6.3V 0.1U	1	
		C805	F1J1A106A043	C.CAPACITOR CH 10V 10U	1	
		C806	F1L0J1040001	C.CAPACITOR CH 6.3V 0.1U	1	
		C808	F1G0J1050007	C.CAPACITOR CH 6.3V 1U	1	
		C831	F1L0J1040001	C.CAPACITOR CH 6.3V 0.1U	1	
		C832	F1G1H332A640	C.CAPACITOR CH 50V 3300P	1	
		C833	F1G0J1050007	C.CAPACITOR CH 6.3V 1U	1	
		C834	F1G1C104A077	C.CAPACITOR CH 16V 0.1U	1	
		C835	F1G1C153A091	C.CAPACITOR CH 16V 0.015U	1	
		C836	F1G1E1030005	C.CAPACITOR CH 25V 0.01U	1	
		C842	F1G1H471A640	C.CAPACITOR CH 50V 470P	1	
		C843	F1G1E1030005	C.CAPACITOR CH 25V 0.01U	1	
		C871	F1G1C104A077	C.CAPACITOR CH 16V 0.1U	1	
		C873	F1G1C104A077	C.CAPACITOR CH 16V 0.1U	1	
		C874	F1G1C104A077	C.CAPACITOR CH 16V 0.1U	1	
		C876	F1G1C104A077	C.CAPACITOR CH 16V 0.1U	1	
		C901	F1G1E1040001	C.CAPACITOR CH 25V 0.1U	1	
		C903	F1G0J1050007	C.CAPACITOR CH 6.3V 1U	1	
		C904	F1G0J1050007	C.CAPACITOR CH 6.3V 1U	1	
		C905	F1H1E105A116	C.CAPACITOR CH 25V 1U	1	
		C906	ECJ1VB1C105K	C.CAPACITOR CH 16V 1U	1	
		C907	F1H1A225A051	C.CAPACITOR CH 10V 2.2U	1	
		C908	F1H1A225A051	C.CAPACITOR CH 10V 2.2U	1	
		C909	F1H0J4750004	C.CAPACITOR CH 6.3V 4.7U	1	
		C910	F1H1A225A051	C.CAPACITOR CH 10V 2.2U	1	
		C911	F1H1A225A051	C.CAPACITOR CH 10V 2.2U	1	
		C912	F1H1A225A051	C.CAPACITOR CH 10V 2.2U	1	
		C913	F1H1A105A036	C.CAPACITOR CH 10V 1U	1	
		C914	F1H1A225A051	C.CAPACITOR CH 10V 2.2U	1	
		C915	ECJ1VB1C105K	C.CAPACITOR CH 16V 1U	1	
		C916	ECJ1VB1C105K	C.CAPACITOR CH 16V 1U	1	
		C917	ECJ1VB1C105K	C.CAPACITOR CH 16V 1U	1	
		C918	ECJ1VB1C105K	C.CAPACITOR CH 16V 1U	1	
		C919	F1G1C104A077	C.CAPACITOR CH 16V 0.1U	1	
		C928	ECJ1VB1C105K	C.CAPACITOR CH 16V 1U	1	
		C1001	F1J1A106A043	C.CAPACITOR CH 10V 10U	1	
		C1002	F1J1A106A043	C.CAPACITOR CH 10V 10U	1	
		C1013	F1G0J1050007	C.CAPACITOR CH 6.3V 1U	1	
		C1061	F1H0J4750004	C.CAPACITOR CH 6.3V 4.7U	1	
		C1101	F1G0J1050007	C.CAPACITOR CH 6.3V 1U	1	
		C1102	F1G0J1050007	C.CAPACITOR CH 6.3V 1U	1	
		C1103	F1G0J1050007	C.CAPACITOR CH 6.3V 1U	1	
		C1104	F1J0J106A049	C.CAPACITOR CH 6.3V 10U	1	
		C1105	F1G0J1050007	C.CAPACITOR CH 6.3V 1U	1	
		C1106	F1G0J1050007	C.CAPACITOR CH 6.3V 1U	1	
		C1107	F1G0J1050007	C.CAPACITOR CH 6.3V 1U	1	
		C1108	F1G0J1050007	C.CAPACITOR CH 6.3V 1U	1	
		C1109	F1G0J1050007	C.CAPACITOR CH 6.3V 1U	1	
		C1110	F1G0J1050007	C.CAPACITOR CH 6.3V 1U	1	
		C1212	F1J0J2260004	C.CAPACITOR CH 6.3V 22U	1	
		C1222	F1J0J106A049	C.CAPACITOR CH 6.3V 10U	1	
		C1232	F1J0J106A049	C.CAPACITOR CH 6.3V 10U	1	
		C1242	F1J0J106A049	C.CAPACITOR CH 6.3V 10U	1	



Model No. : HC-V110 Parts List

Change	Safety	Ref. No.	Part No.	Part Name & Description	Q'ty	Remarks
		C1252	F1J0J106A049	C.CAPACITOR CH 6.3V 10U	1	
		C1262	F1J0J106A049	C.CAPACITOR CH 6.3V 10U	1	
		C1271	F1H1E105A116	C.CAPACITOR CH 25V 1U	1	
		C1272	F1H1E105A116	C.CAPACITOR CH 25V 1U	1	
		C1339	F3F0G4760004	E.CAPACITOR CH 4V 47U	1	
		C1351	F1J0J2260004	C.CAPACITOR CH 6.3V 22U	1	
		C1352	F1J0J2260004	C.CAPACITOR CH 6.3V 22U	1	
		C1369	F3G0J1070004	E.CAPACITOR CH 6.3V 100U	1	
		C1421	F1G0J1050007	C.CAPACITOR CH 6.3V 1U	1	
		C1422	F1G0J1050007	C.CAPACITOR CH 6.3V 1U	1	
		C1501	F1J1A106A043	C.CAPACITOR CH 10V 10U	1	
		C1507	F1L0J1040001	C.CAPACITOR CH 6.3V 0.1U	1	
		C1508	F1L0J1040001	C.CAPACITOR CH 6.3V 0.1U	1	
		C1511	F1J1A106A043	C.CAPACITOR CH 10V 10U	1	
		C1512	F1H1E105A116	C.CAPACITOR CH 25V 1U	1	
		C1515	F1L0J1040001	C.CAPACITOR CH 6.3V 0.1U	1	
		C1516	F1G1C104A077	C.CAPACITOR CH 16V 0.1U	1	
		C1518	F1J1A106A043	C.CAPACITOR CH 10V 10U	1	
		C1519	F1J1A106A043	C.CAPACITOR CH 10V 10U	1	
		C1572	F1H1E105A116	C.CAPACITOR CH 25V 1U	1	
		C1573	F1G1C104A077	C.CAPACITOR CH 16V 0.1U	1	
		C1574	F1G1C104A077	C.CAPACITOR CH 16V 0.1U	1	
		C2301	F1L0J1040001	C.CAPACITOR CH 6.3V 0.1U	1	
		C2304	F1L0J1040001	C.CAPACITOR CH 6.3V 0.1U	1	
		C2305	F1L0J1040001	C.CAPACITOR CH 6.3V 0.1U	1	
		C2310	F1G1H8R0A642	C.CAPACITOR CH 50V 8P	1	
		C2311	F1G1E1030005	C.CAPACITOR CH 25V 0.01U	1	
		C3401	F1J1A106A043	C.CAPACITOR CH 10V 10U	1	
		C3402	F1J1A106A043	C.CAPACITOR CH 10V 10U	1	
		C3404	F1G1C104A077	C.CAPACITOR CH 16V 0.1U	1	
		C3405	F1G1C104A077	C.CAPACITOR CH 16V 0.1U	1	
		C3406	F1G1C104A077	C.CAPACITOR CH 16V 0.1U	1	
		C3407	F1G1C104A077	C.CAPACITOR CH 16V 0.1U	1	
		C3408	F1G1C104A077	C.CAPACITOR CH 16V 0.1U	1	
		C3409	F1G1E1030005	C.CAPACITOR CH 25V 0.01U	1	
		C3412	F1J1A106A043	C.CAPACITOR CH 10V 10U	1	
		C3414	F1G1C104A077	C.CAPACITOR CH 16V 0.1U	1	
		C3415	F1J1A106A043	C.CAPACITOR CH 10V 10U	1	
		C3416	F1J1A106A043	C.CAPACITOR CH 10V 10U	1	
		C3418	F1G1C104A077	C.CAPACITOR CH 16V 0.1U	1	
		C3419	F1G1C104A077	C.CAPACITOR CH 16V 0.1U	1	
		C3420	F1G1C104A077	C.CAPACITOR CH 16V 0.1U	1	
		C3421	F1G1C104A077	C.CAPACITOR CH 16V 0.1U	1	
		C3422	F1G1C104A077	C.CAPACITOR CH 16V 0.1U	1	
		C3423	F1G1C104A077	C.CAPACITOR CH 16V 0.1U	1	
		C3424	F1G1C104A077	C.CAPACITOR CH 16V 0.1U	1	
		C3425	F1G1C104A077	C.CAPACITOR CH 16V 0.1U	1	
		C3426	F1G1E682A097	C.CAPACITOR CH 25V 6800P	1	
		C3427	F1J1A106A043	C.CAPACITOR CH 10V 10U	1	
		C3428	F1G0J1050007	C.CAPACITOR CH 6.3V 1U	1	
		C3429	F1G1C104A077	C.CAPACITOR CH 16V 0.1U	1	
		C3430	F1G0J1050007	C.CAPACITOR CH 6.3V 1U	1	
		C3432	F1L1A103A016	C.CAPACITOR CH 10V 0.01U	1	
		C3433	F1G1C104A077	C.CAPACITOR CH 16V 0.1U	1	
		C3434	F1G1C104A077	C.CAPACITOR CH 16V 0.1U	1	
		C3435	F1G0J1050007	C.CAPACITOR CH 6.3V 1U	1	
		C3436	F1G0J1050007	C.CAPACITOR CH 6.3V 1U	1	
		C3437	F1G1C104A077	C.CAPACITOR CH 16V 0.1U	1	
		C3438	F1G1C104A077	C.CAPACITOR CH 16V 0.1U	1	
		C3439	F1L1A103A016	C.CAPACITOR CH 10V 0.01U	1	
		C3441	F1J1A106A043	C.CAPACITOR CH 10V 10U	1	
		C3442	F1J1A106A043	C.CAPACITOR CH 10V 10U	1	

Model No. : HC-V110 Parts List

Change	Safety	Ref. No.	Part No.	Part Name & Description	Q'ty	Remarks
		C3443	F1G0J1050007	C.CAPACITOR CH 6.3V 1U	1	
		C3444	F1G0J1050007	C.CAPACITOR CH 6.3V 1U	1	
		C3445	F1G1C104A077	C.CAPACITOR CH 16V 0.1U	1	
		C3446	F1G1C104A077	C.CAPACITOR CH 16V 0.1U	1	
		C3447	F1G1C104A077	C.CAPACITOR CH 16V 0.1U	1	
		C3448	F1G0J1050007	C.CAPACITOR CH 6.3V 1U	1	
		C3449	F1G0J1050007	C.CAPACITOR CH 6.3V 1U	1	
		C3450	F1G1C104A077	C.CAPACITOR CH 16V 0.1U	1	
		C3451	F1G1C104A077	C.CAPACITOR CH 16V 0.1U	1	
		C3452	F1G1C104A077	C.CAPACITOR CH 16V 0.1U	1	
		C3455	F1G1C104A077	C.CAPACITOR CH 16V 0.1U	1	
		C3456	F1J1A106A043	C.CAPACITOR CH 10V 10U	1	
		C3457	F1G1C104A077	C.CAPACITOR CH 16V 0.1U	1	
		C3458	F1L1A103A016	C.CAPACITOR CH 10V 0.01U	1	
		C3459	F1L1A103A016	C.CAPACITOR CH 10V 0.01U	1	
		C3460	F1G1E1030005	C.CAPACITOR CH 25V 0.01U	1	
		C3462	F1G0J1050007	C.CAPACITOR CH 6.3V 1U	1	
		C3463	F1G1C104A077	C.CAPACITOR CH 16V 0.1U	1	
		C3464	F1L1A103A016	C.CAPACITOR CH 10V 0.01U	1	
		C3465	F1L1A103A016	C.CAPACITOR CH 10V 0.01U	1	
		C3466	F1L0J1040001	C.CAPACITOR CH 6.3V 0.1U	1	
		C3467	F1G1C104A077	C.CAPACITOR CH 16V 0.1U	1	
		C3468	F1J1A106A043	C.CAPACITOR CH 10V 10U	1	
		C3470	F1J1A106A043	C.CAPACITOR CH 10V 10U	1	
		C3701	F1G1H471A640	C.CAPACITOR CH 50V 470P	1	
		C3702	F1J1A106A043	C.CAPACITOR CH 10V 10U	1	
		C3703	F1G0J1050007	C.CAPACITOR CH 6.3V 1U	1	
		C3704	F1G0J1050007	C.CAPACITOR CH 6.3V 1U	1	
		C3705	F1L0J1040001	C.CAPACITOR CH 6.3V 0.1U	1	
		C3706	F1L0J1040001	C.CAPACITOR CH 6.3V 0.1U	1	
		C3707	F1H0J2250008	C.CAPACITOR CH 6.3V 2.2U	1	
		C3708	F1H0J2250008	C.CAPACITOR CH 6.3V 2.2U	1	
		C3709	F1L0J1040001	C.CAPACITOR CH 6.3V 0.1U	1	
		C3710	F1J0J2260004	C.CAPACITOR CH 6.3V 22U	1	
		C3711	F1L0J1040001	C.CAPACITOR CH 6.3V 0.1U	1	
		C3712	F1L0J1040001	C.CAPACITOR CH 6.3V 0.1U	1	
		C3713	F1G1H471A640	C.CAPACITOR CH 50V 470P	1	
		C3715	F1G0J1050007	C.CAPACITOR CH 6.3V 1U	1	
		C3716	F1L0J1040001	C.CAPACITOR CH 6.3V 0.1U	1	
		C3906	F1G1C104A077	C.CAPACITOR CH 16V 0.1U	1	
		C3907	F3G0J1070004	E.CAPACITOR CH 6.3V 100U	1	
		C3908	F1G1E1030005	C.CAPACITOR CH 25V 0.01U	1	
		C3910	F1G1E1030005	C.CAPACITOR CH 25V 0.01U	1	
		C6001	F1G1C104A077	C.CAPACITOR CH 16V 0.1U	1	
		C6002	F1L0J1040001	C.CAPACITOR CH 6.3V 0.1U	1	
		C6003	F1L0J1040001	C.CAPACITOR CH 6.3V 0.1U	1	
		C6005	F1G1H472A571	C.CAPACITOR CH 50V 4700P	1	
		C6006	F1G1H472A571	C.CAPACITOR CH 50V 4700P	1	
		C6017	F1G0J1050007	C.CAPACITOR CH 6.3V 1U	1	
		C6018	F1L0J1040001	C.CAPACITOR CH 6.3V 0.1U	1	
		C6019	F1G0J1050007	C.CAPACITOR CH 6.3V 1U	1	
		C6023	F1L0J1040001	C.CAPACITOR CH 6.3V 0.1U	1	
		C6024	ECJ1VB1A105K	C.CAPACITOR CH 10V 1U	1	
		C6031	F1G0J1050007	C.CAPACITOR CH 6.3V 1U	1	
		C6407	F1G1C104A077	C.CAPACITOR CH 16V 0.1U	1	
		C6408	ECJ1VB1A105K	C.CAPACITOR CH 10V 1U	1	
		C6412	F1H1E105A116	C.CAPACITOR CH 25V 1U	1	
		D901	DZ2J160M0L	DIODE	1	E.S.D.
		D902	B3AFB0000321	DIODE	1	E.S.D.
		D903	B3AFB0000321	DIODE	1	E.S.D.
		D904	B3AFB0000321	DIODE	1	E.S.D.
		D905	B3AFB0000321	DIODE	1	E.S.D.


Model No. : HC-V110 Parts List

Change	Safety	Ref. No.	Part No.	Part Name & Description	Q'ty	Remarks
		D906	B0JCCD000003	DIODE	1	E.S.D.
		D907	B0JCCD000003	DIODE	1	E.S.D.
		D1271	B0ACRC000001	DIODE	1	E.S.D.
		D1503	B0JCMC000019	DIODE	1	E.S.D.
		D1505	DB2S31100L	DIODE	1	E.S.D.
		D2301	DB2S31100L	DIODE	1	E.S.D.
		D3401	DB2S31100L	DIODE	1	E.S.D.
		D3402	DB2S31100L	DIODE	1	E.S.D.
		D6451	B3AAB0000343	LED	1	E.S.D.
		FL3701	EXC14CE900	FILTER	1	
		FL6001	J0ZZB0000148	FILTER	1	
		FL6002	J0ZZB0000148	FILTER	1	
		FP301	K1MY33AA0199	CONNECTOR 33P	1	
		FP503	K1MY04BA0385	CONNECTOR 4P	1	
		FP901	K1MY30BA0385	CONNECTOR 30P	1	
		FP904	K1MY41BA0369	CONNECTOR 41P	1	
		FP6001	K1MY35AA0199	CONNECTOR 35P	1	
		FP6003	K1MN06BA0108	CONNECTOR 6P	1	
		FP6008	K1MY33AA0199	CONNECTOR 33P	1	
		FP6402	K1MY10BA0370	CONNECTOR 10P	1	
		HS3901	K1NA09E00098	SD CARD SLOT	1	
		IC301	C0DBGFC00008	IC	1	E.S.D.
		IC302	C0JBAA000577	IC	1	E.S.D.
		IC511	B4ZZ00000031	IC	1	E.S.D.
		IC801	C1AB00003450	IC	1	E.S.D.
		IC802	C1AB00003450	IC	1	E.S.D.
		IC805	C0ABCB000122	IC	1	E.S.D.
		IC806	C0ABGA000035	IC	1	E.S.D.
		IC807	C0DBGYY00908	IC	1	E.S.D.
		IC1001	C1ZBZ0004885	IC	1	E.S.D.
		IC1421	C0DBGYY00936	IC	1	E.S.D.
		IC1422	C0DBGYY00936	IC	1	E.S.D.
		IC1503	C0DBDYY00054	IC	1	E.S.D.
		IC1571	C0ZBZ0002039	IC	1	E.S.D.
		IC2301	C0EBY0000661	IC	1	E.S.D.
		IC3401	MN2FS0151	IC	1	E.S.D.
		IC3402	C3ABTY000068	IC	1	E.S.D.
		IC3403	C3ABTY000068	IC	1	E.S.D.
		IC3404	C3FBTY000033	IC	1	E.S.D.
		IC3406	C0EBY0000906	IC	1	E.S.D.
		IC3701	C1AB00003985	IC	1	E.S.D.
		IC3702	C0ZBZ0001730	IC	1	E.S.D.
		IP6401	K5H402YA0080	IC PROTECTOR	1	
		IP6701	K5H402YA0080	IC PROTECTOR	1	
		JK6001	K2HC106E0009	JK, EXT MIC	1	
		JK6003	K1FA119E0020	JK, HDMI	1	
		JK6402	K2HZ105E0011	JACK, USB	1	
		JK6701	K4ZZ04000056	JK, BATTERY	1	
		L301	G1C100KA0115	CHIP INDUCTOR 10UH	1	
		L302	G1C100KA0115	CHIP INDUCTOR 10UH	1	
		L303	G1C100KA0115	CHIP INDUCTOR 10UH	1	
		L1211	G1C4R7MA0478	CHIP INDUCTOR 4.7UH	1	
		L1221	G1C3R3MA0477	CHIP INDUCTOR 3.3UH	1	
		L1231	G1C3R3ZA0240	CHIP INDUCTOR 3.3UH	1	
		L1241	G1C4R7MA0477	CHIP INDUCTOR 4.7UH	1	
		L1251	G1C4R7MA0478	CHIP INDUCTOR 4.7UH	1	
		L1261	G1C4R7MA0477	CHIP INDUCTOR 4.7UH	1	
		L1271	G1C6R8MA0478	CHIP INDUCTOR 6.8UH	1	
		L1501	G1C4R7ZA0240	CHIP INDUCTOR 4.7UH	1	
		L3401	G1C100MA0408	CHIP INDUCTOR 10UH	1	
		L3402	G1C100MA0408	CHIP INDUCTOR 10UH	1	
		L3403	G1C100MA0408	CHIP INDUCTOR 10UH	1	

Model No. : HC-V110 Parts List

Change	Safety	Ref. No.	Part No.	Part Name & Description	Q'ty	Remarks
		L3404	G1C100MA0408	CHIP INDUCTOR 10UH	1	
		LB301	J0JBC0000099	FILTER	1	
		LB505	J0JCC0000276	FILTER	1	
		LB904	J0JHC0000078	FILTER	1	
		LB3401	J0JBC0000099	FILTER	1	
		LB6001	J0JCC0000276	FILTER	1	
		LB6002	J0JCC0000276	FILTER	1	
		LB6003	J0JCC0000276	FILTER	1	
		LB6004	J0JCC0000276	FILTER	1	
		LB6005	J0JBC0000115	FILTER	1	
		LB6006	J0JCC0000276	FILTER	1	
		LB6007	J0JCC0000276	FILTER	1	
		LB6008	J0JCC0000276	FILTER	1	
		LB6403	J0JJC0000015	FILTER	1	
		LB6701	J0JCC0000276	FILTER	1	
		LB6702	J0JCC0000276	FILTER	1	
		LB6703	J0JJC0000015	FILTER	1	
		P6003	K1KY06BA0314	CONNECTOR 6P	1	
		P6401	K1KA02BA0014	CONNECTOR 2P	1	
		P6701	K1KY06BA0314	CONNECTOR 6P	1	
		PP6001	K1KY50BA0082	CONNECTOR 50P	1	
		PS6401	K1KB50AA0094	CONNECTOR 50P	1	
		Q831	B1ABGE000015	TRANSISTOR	1	E.S.D.
		Q1501	B1CHQD000012	TRANSISTOR	1	E.S.D.
		Q1502	MTM684110LBF	TRANSISTOR	1	E.S.D.
		Q1503	B1CHQC000007	TRANSISTOR	1	E.S.D.
		Q1504	FK3303010L	TRANSISTOR	1	E.S.D.
		Q1571	B1CHQD000012	TRANSISTOR	1	E.S.D.
		Q1572	DSC300100L	TRANSISTOR	1	E.S.D.
		Q1573	DSC300100L	TRANSISTOR	1	E.S.D.
		Q3701	DSC300100L	TRANSISTOR	1	E.S.D.
		Q6001	B1ADKB000015	TRANSISTOR	1	E.S.D.
		QR833	DRC3143T0L	TRANSISTOR-RESISTOR	1	E.S.D.
		QR1001	DRC3143E0L	TRANSISTOR-RESISTOR	1	E.S.D.
		QR1002	DRA3124X0L	TRANSISTOR-RESISTOR	1	E.S.D.
		QR1003	DRC3143E0L	TRANSISTOR-RESISTOR	1	E.S.D.
		QR1004	DRA3124X0L	TRANSISTOR-RESISTOR	1	E.S.D.
		QR1101	DRC3114E0L	TRANSISTOR-RESISTOR	1	E.S.D.
		QR2308	DRA3144E0L	TRANSISTOR-RESISTOR	1	E.S.D.
		QR2389	DRC3114E0L	TRANSISTOR-RESISTOR	1	E.S.D.
		QR3403	DRC3114T0L	TRANSISTOR-RESISTOR	1	E.S.D.
		QR6006	DRA3124X0L	TRANSISTOR-RESISTOR	1	E.S.D.
		QR6007	DRA3124X0L	TRANSISTOR-RESISTOR	1	E.S.D.
		QR6008	DRC3114E0L	TRANSISTOR-RESISTOR	1	E.S.D.
		QR6401	DRA9114T0L	TRANSISTOR-RESISTOR	1	E.S.D.
		QR6402	DRA9114T0L	TRANSISTOR-RESISTOR	1	E.S.D.
		R304	ERJ1GEJ272	M.RESISTOR CH 1/20W 2.7K	1	
		R305	D0GA390JA023	RESISTOR	1	
		R505	D0GA222JA023	M.RESISTOR CH 1/10W 2.2K	1	
		R775	ERJ1GEJ221	M.RESISTOR CH 1/20W 220	1	
		R776	ERJ1GEJ473	M.RESISTOR CH 1/20W 47K	1	
		R778	ERJ1GEJ473	M.RESISTOR CH 1/20W 47K	1	
		R779	ERJ1GEJ221	M.RESISTOR CH 1/20W 220	1	
		R831	D0GA512JA023	M.RESISTOR CH 1/10W 5.1K	1	
		R832	D0GA103JA023	M.RESISTOR CH 1/10W 10K	1	
		R833	D0GA104JA023	M.RESISTOR CH 1/16W 100K	1	
		R834	ERJ1GEJ223	M.RESISTOR CH 1/20W 22K	1	
		R835	D0GA102JA023	M.RESISTOR CH 1/10W 1K	1	
		R836	D0GA473JA023	RESISTOR	1	
		R837	ERJ1GEJ153	M.RESISTOR CH 1/20W 15K	1	
		R841	ERJ1GEJ334	M.RESISTOR CH 1/20W 330K	1	
		R842	D0GA153JA023	RESISTOR	1	

Model No. : HC-V110 Parts List

Change	Safety	Ref. No.	Part No.	Part Name & Description	Q'ty	Remarks
		R843	D0GA103JA023	M.RESISTOR CH 1/10W 10K	1	
		R844	D0GA334JA023	M.RESISTOR CH 1/10W 330K	1	
		R853	ERJ2RHD101	M.RESISTOR CH 1/16W 100	1	
		R869	ERJ1GE0R00C	M.RESISTOR CH 1/20W 0	1	
		R871	ERJ2RHD153X	M.RESISTOR CH 1/16W 15K	1	
		R872	ERJ2RHD102X	M.RESISTOR CH 1/16W 1K	1	
		R873	D0GA472JA023	M.RESISTOR CH 1/10W 4.7K	1	
		R874	D0GA472JA023	M.RESISTOR CH 1/10W 4.7K	1	
		R875	ERJ1GEJ473	M.RESISTOR CH 1/20W 47K	1	
		R876	D0GA472JA023	M.RESISTOR CH 1/10W 4.7K	1	
		R877	ERJ1GEJ683	M.RESISTOR CH 1/20W 68K	1	
		R906	D0GA105JA023	M.RESISTOR CH 1/10W 1M	1	
		R1104	D0GA473JA023	RESISTOR	1	
		R1105	D0GA200JA023	RESISTOR	1	
		R1107	ERJ1GEJ103	M.RESISTOR CH 1/20W 10K	1	
		R1252	ERJ2RHD104	M.RESISTOR CH 1/16W 100K	1	
		R1253	ERJ2RHD153X	M.RESISTOR CH 1/16W 15K	1	
		R1254	ERJ2RKD224	M.RESISTOR CH 1/16W 220K	1	
		R1262	ERJ2RHD183	M.RESISTOR CH 1/16W 18K	1	
		R1263	ERJ2RHD152	M.RESISTOR CH 1/16W 1.5K	1	
		R1264	ERJ2RHD223	M.RESISTOR CH 1/16W 22K	1	
		R1271	D1JBR095A023	FUSING RESISTOR 0.95	1	
		R1425	D0GA472JA023	M.RESISTOR CH 1/10W 4.7K	1	
		R1426	D0GA272JA023	M.RESISTOR CH 1/10W 2.7K	1	
		R1513	ERJ2RKD154	M.RESISTOR CH 1/16W 150K	1	
		R1515	ERJ2RKD124	M.RESISTOR CH 1/16W 120K	1	
		R1516	ERJ1GEJ102	M.RESISTOR CH 1/20W 1K	1	
		R1517	ERJ1GEJ104	M.RESISTOR CH 1/20W 100K	1	
		R1522	ERJ2RKD124	M.RESISTOR CH 1/16W 120K	1	
		R1523	ERJ2RKD184	M.RESISTOR CH 1/16W 180K	1	
		R1525	ERJ2RHD223	M.RESISTOR CH 1/16W 22K	1	
		R1526	D1BDR100A111	RESISTOR	1	
		R1529	D0GA101JA023	M.RESISTOR CH 1/10W 100	1	
		R1531	D0GA220JA023	M.RESISTOR CH 1/10W 22	1	
		R1535	D0GA472JA023	M.RESISTOR CH 1/10W 4.7K	1	
		R1572	D0GA104JA023	M.RESISTOR CH 1/16W 100K	1	
		R1573	D0GA104JA023	M.RESISTOR CH 1/16W 100K	1	
		R1575	D0GA104JA023	M.RESISTOR CH 1/16W 100K	1	
		R1576	D0GA104JA023	M.RESISTOR CH 1/16W 100K	1	
		R1577	D0GA433JA023	RESISTOR	1	
		R1582	D0GA472JA023	M.RESISTOR CH 1/10W 4.7K	1	
		R1583	D0GA102JA023	M.RESISTOR CH 1/10W 1K	1	
		R1584	D0GA433JA023	RESISTOR	1	
		R1585	D0GA102JA023	M.RESISTOR CH 1/10W 1K	1	
		R1591	D0GBR00J0004	RESISTOR	1	
		R2304	ERJ1GEJ102	M.RESISTOR CH 1/20W 1K	1	
		R2312	D0GA472JA023	M.RESISTOR CH 1/10W 4.7K	1	
		R3401	D0GBR00J0004	RESISTOR	1	
		R3413	ERJ2RHD241	M.RESISTOR CH 1/16W 240	1	
		R3414	ERJ2RHD241	M.RESISTOR CH 1/16W 240	1	
		R3415	ERJ2RHD241	M.RESISTOR CH 1/16W 240	1	
		R3416	ERJ2RHD511	M.RESISTOR CH 1/16W 510	1	
		R3420	ERJ2RHD511	M.RESISTOR CH 1/16W 510	1	
		R3425	ERJ2RHD121	M.RESISTOR CH 1/16W 120	1	
		R3426	ERJ2RHD102X	M.RESISTOR CH 1/16W 1K	1	
		R3427	ERJ2RHD102X	M.RESISTOR CH 1/16W 1K	1	
		R3428	ERJ1GEJ102	M.RESISTOR CH 1/20W 1K	1	
		R3430	ERJ1GEJ102	M.RESISTOR CH 1/20W 1K	1	
		R3431	ERJ2RHD241	M.RESISTOR CH 1/16W 240	1	
		R3432	ERJ2RHD471X	M.RESISTOR CH 1/16W 470	1	
		R3433	ERJ2RHD622	M.RESISTOR CH 1/16W 6.2K	1	
		R3434	D0GA103JA023	M.RESISTOR CH 1/10W 10K	1	

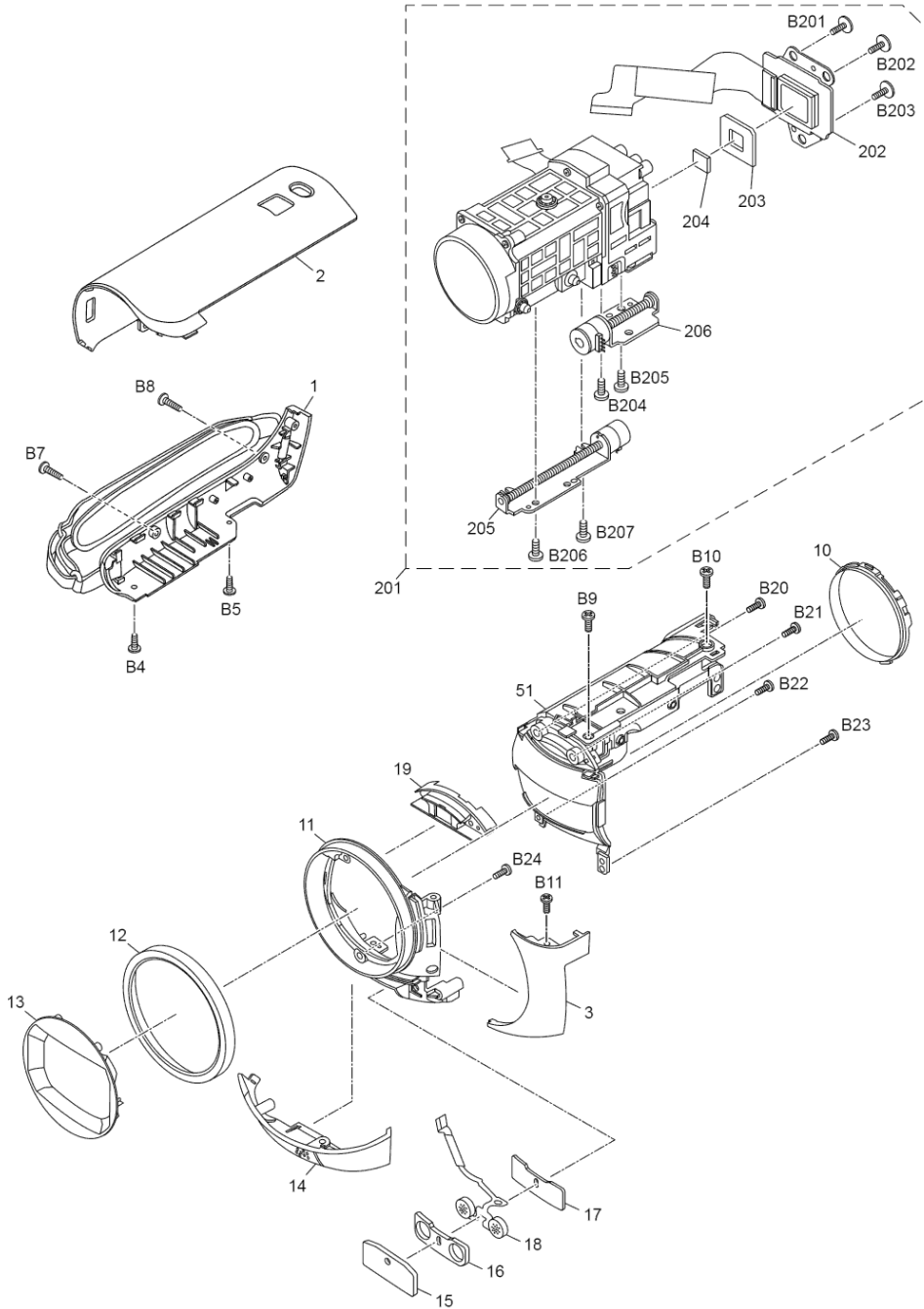
Model No. : HC-V110 Parts List

Change	Safety	Ref. No.	Part No.	Part Name & Description	Q'ty	Remarks
		R3435	ERJ1GEJ273	M.RESISTOR CH 1/20W 27K	1	
		R3440	ERJ1GEJ182	M.RESISTOR CH 1/20W 1.8K	1	
		R3441	ERJ2RHD102X	M.RESISTOR CH 1/16W 1K	1	
		R3442	ERJ2RHD102X	M.RESISTOR CH 1/16W 1K	1	
		R3443	ERJ2RHD241	M.RESISTOR CH 1/16W 240	1	
		R3444	ERJ1GEJ182	M.RESISTOR CH 1/20W 1.8K	1	
		R3447	ERJ1GE0R00C	M.RESISTOR CH 1/20W 0	1	
		R3449	ERJ1GEJ473	M.RESISTOR CH 1/20W 47K	1	
		R3451	ERJ1GEJ473	M.RESISTOR CH 1/20W 47K	1	
		R3452	D0GA560JA023	RESISTOR	1	
		R3453	ERJ2GEJ270	M.RESISTOR CH 1/10W 27	1	
		R3458	ERJ1GEJ102	M.RESISTOR CH 1/20W 1K	1	
		R3461	ERJ2RKD184	M.RESISTOR CH 1/16W 180K	1	
		R3462	ERJ2RKD184	M.RESISTOR CH 1/16W 180K	1	
		R3463	ERJ1GEJ472	M.RESISTOR CH 1/20W 4.7K	1	
		R3469	ERJ1GEJ472	M.RESISTOR CH 1/20W 4.7K	1	
		R3472	ERJ2RHD183	M.RESISTOR CH 1/16W 18K	1	
		R3473	ERJ2RHD223	M.RESISTOR CH 1/16W 22K	1	
		R3474	ERJ2RHD103	M.RESISTOR CH 1/16W 10K	1	
		R3475	ERJ1GEJ221	M.RESISTOR CH 1/20W 220	1	
		R3476	ERJ1GEJ221	M.RESISTOR CH 1/20W 220	1	
		R3487	ERJ1GE0R00C	M.RESISTOR CH 1/20W 0	1	
		R3497	ERJ2RHD101	M.RESISTOR CH 1/16W 100	1	
		R3701	VRE0071E392	M.RESISTOR CH 1/10W 3.9K	1	
		R3702	VRE0071E392	M.RESISTOR CH 1/10W 3.9K	1	
		R3703	ERJ1GEJ472	M.RESISTOR CH 1/20W 4.7K	1	
		R3704	ERJ1GEJ102	M.RESISTOR CH 1/20W 1K	1	
		R3705	ERJ1GEJ103	M.RESISTOR CH 1/20W 10K	1	
		R3796	ERJ1GEJ102	M.RESISTOR CH 1/20W 1K	1	
		R3797	ERJ1GEJ102	M.RESISTOR CH 1/20W 1K	1	
		R3798	ERJ1GE0R00C	M.RESISTOR CH 1/20W 0	1	
		R3901	D0GA560JA023	RESISTOR	1	
		R3902	D0GA560JA023	RESISTOR	1	
		R3903	D0GA103JA023	M.RESISTOR CH 1/10W 10K	1	
		R6001	D0GA102JA023	M.RESISTOR CH 1/10W 1K	1	
		R6006	D0GA102JA023	M.RESISTOR CH 1/10W 1K	1	
		R6007	ERJ1GEJ103	M.RESISTOR CH 1/20W 10K	1	
		R6008	ERJ1GEJ103	M.RESISTOR CH 1/20W 10K	1	
		R6009	D0GA221JA023	M.RESISTOR CH 1/10W 220	1	
		R6010	D0GA221JA023	M.RESISTOR CH 1/10W 220	1	
		R6011	ERJ2RKD680	M.RESISTOR CH 1/16W 68	1	
		R6015	D0GAR00J0005	M.RESISTOR CH 1/10W 0	1	
		R6016	D0GAR00J0005	M.RESISTOR CH 1/10W 0	1	
		R6028	ERJ1GE0R00C	M.RESISTOR CH 1/20W 0	1	
		R6029	ERJ1GE0R00C	M.RESISTOR CH 1/20W 0	1	
		R6030	D0GAR00J0005	M.RESISTOR CH 1/10W 0	1	
		R6031	ERJ1GEJ331	M.RESISTOR CH 1/20W 330	1	
		R6032	ERJ1GEJ102	M.RESISTOR CH 1/20W 1K	1	
		R6033	D0GB150JA057	M.RESISTOR CH 1/10W 15	1	
		R6034	ERJ1GEJ333	M.RESISTOR CH 1/20W 33K	1	
		R6035	ERJ1GEJ271	M.RESISTOR CH 1/20W 270	1	
		R6401	ERJ2RHD103	M.RESISTOR CH 1/16W 10K	1	
		R6405	D0GA101JA023	M.RESISTOR CH 1/10W 100	1	
		R6406	ERJ2RHD202	M.RESISTOR CH 1/16W 2K	1	
		R6407	ERJ2RHD302	M.RESISTOR CH 1/16W 3K	1	
		R6408	ERJ2RHD153X	M.RESISTOR CH 1/16W 15K	1	
		R6413	D0GBR00J0004	RESISTOR	1	
		RX3401	D1H84734A024	RESISTOR NETWORKS	1	
		RX3404	EXB28V103JX	RESISTOR NETWORKS	1	
		RX3405	D1H84734A024	RESISTOR NETWORKS	1	
		RX3406	D1H82704A024	RESISTOR NETWORKS	1	
		RX3409	EXB28V103JX	RESISTOR NETWORKS	1	

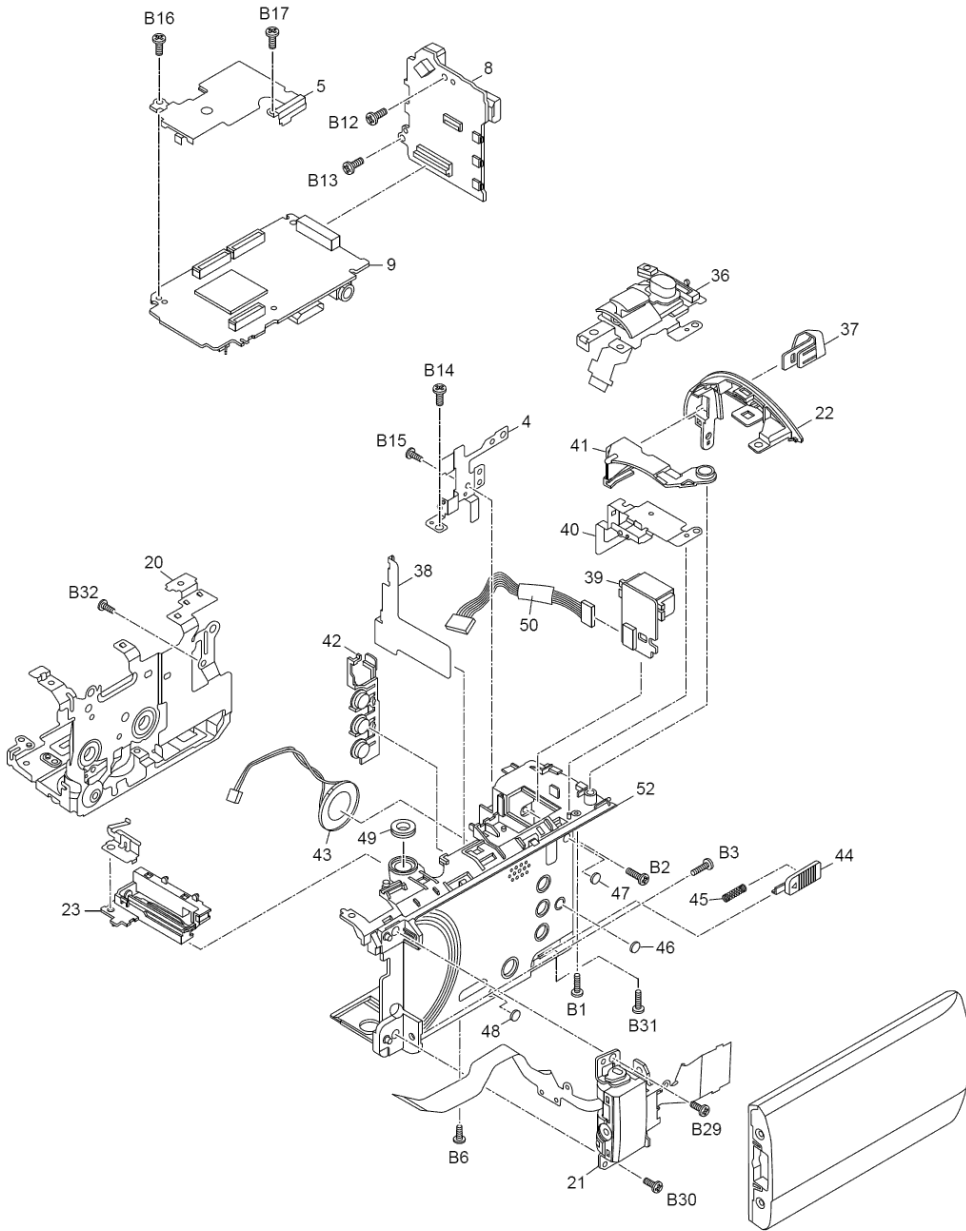
Model No. : HC-V110 Parts List

Change	Safety	Ref. No.	Part No.	Part Name & Description	Q'ty	Remarks
		RX3410	EXB28V103JX	RESISTOR NETWORKS	1	
		RX3412	EXB28V103JX	RESISTOR NETWORKS	1	
		RX3901	D1H85604A024	RESISTOR NETWORKS	1	
		RX3902	EXB28V103JX	RESISTOR NETWORKS	1	
		RX3903	D1H81024A024	RESISTOR NETWORKS	1	
		RX6001	D1H88204A024	RESISTOR NETWORKS	1	
		RX6002	D1H88204A024	RESISTOR NETWORKS	1	
		RX6003	D1H88204A024	RESISTOR NETWORKS	1	
		S6001	ESE18L62BXFD	SWITCH	1	
		S6401	K0H1BA000580	SWITCH	1	
		S6402	K0H1BA000580	SWITCH	1	
		S6403	K0H1BA000580	SWITCH	1	
		S6404	K0F111A00475	SWITCH	1	
		VA505	D4EDY1310001	VARISTOR	1	
		VA903	D4ED18R00003	VARISTOR	1	
		VA904	D4ED18R00003	VARISTOR	1	
		VA905	D4ED18R00003	VARISTOR	1	
		VA1502	D4ED1270A011	VARISTOR	1	
		VA3701	D4EDY1310001	VARISTOR	1	
		VA3702	D4EDY1310001	VARISTOR	1	
		VA3902	D4EDY1310001	VARISTOR	1	
		VA6001	D4EDY1310001	VARISTOR	1	
		VA6002	D4EDY1310001	VARISTOR	1	
		VA6403	D4EDY1310001	VARISTOR	1	
		VA6404	D4EDY1310001	VARISTOR	1	
		VA6701	D4EDY1310001	VARISTOR	1	
		VA6702	D4EDY1310001	VARISTOR	1	
		X2303	H0J327200085	CRYSTAL OSCILLATOR	1	
		X3402	H1A6005B0019	CRYSTAL OSCILLATOR	1	

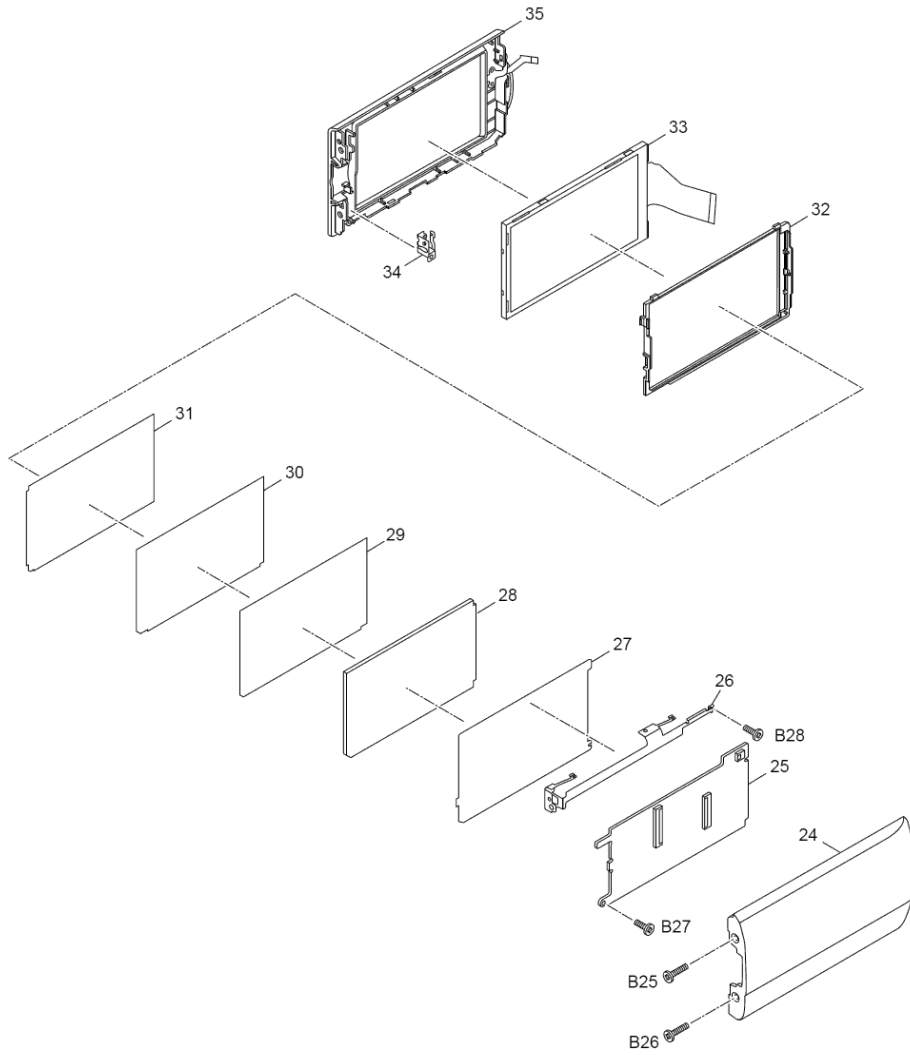
Model No. : HC-V110 Frame and Casing Section (1)



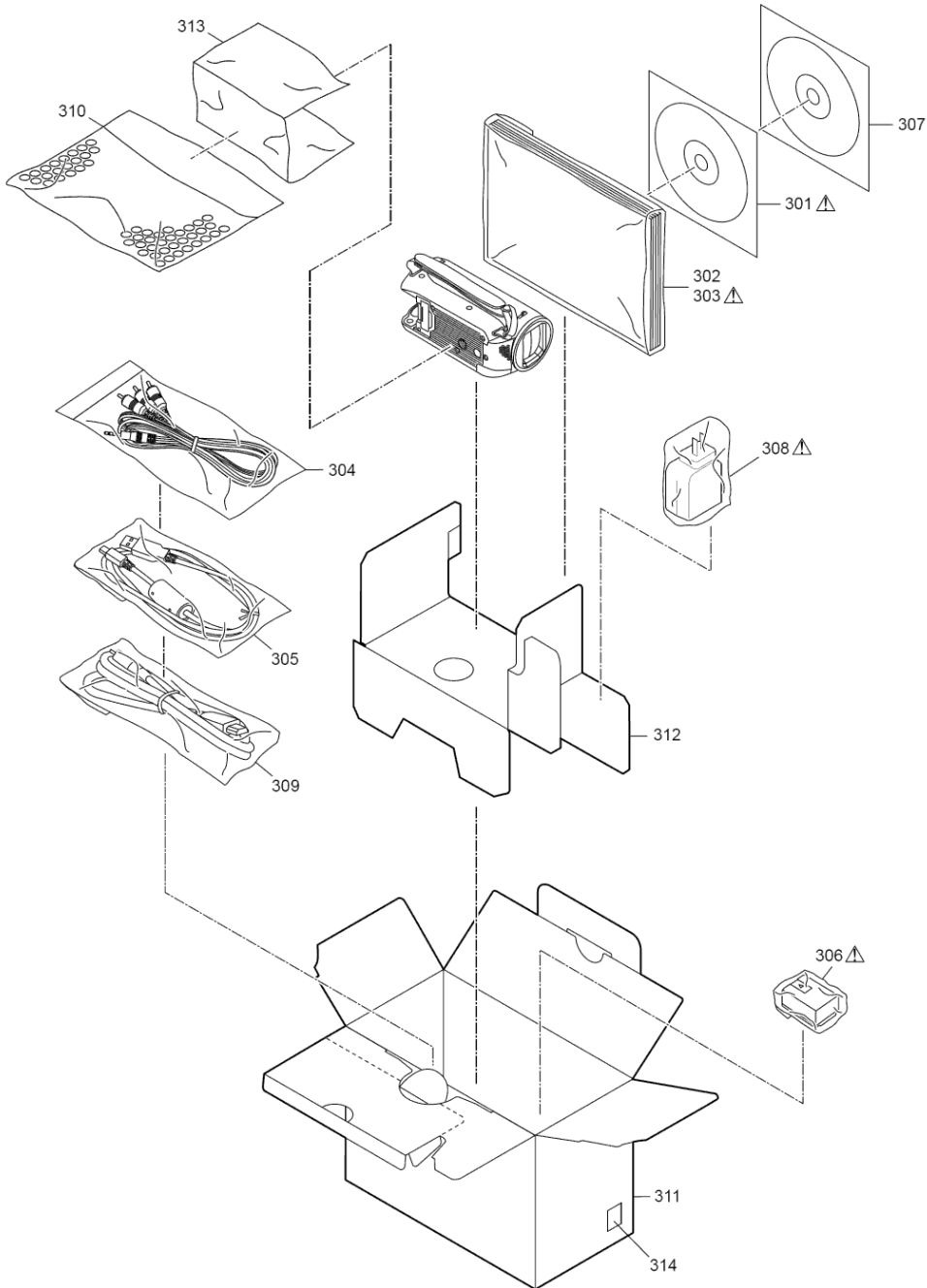
Model No. : HC-V110 Frame and Casing Section (2)



Model No. : HC-V110 LCD Section



Model No. : HC-V110 Packing Parts and Accessories Section


















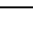
Model No. : HC-V110 Parts List

Change	Safety	Ref. No.	Part No.	Part Name & Description	Q'ty	Remarks
		1	VYK6D66	SIDE CASE-L UNIT	1	
		2	VKM0E53	TOP CASE	1	(-K)
		2	VKM0E55	TOP CASE	1	(-R)
		2	VKM0F73	TOP CASE	1	(-A)
		2	VKM0E54	TOP CASE	1	(-S)
		3	VKM0E58	FRONT COVER	1	(-K)
		3	VKM0E60	FRONT COVER	1	(-R)
		3	VKM0F74	FRONT COVER	1	(-A)
		3	VKM0E59	FRONT COVER	1	(-S)
		4	VMP0C42	SD P.C.B. ANGLE	1	
		5	VXK2038	HEAT RADIATION FRAME UNIT	1	
		8	VEP03J91B	SD HOLDER P.C.B.	1	(RTL)E.S.D.
		9	VEP03J90F	MAIN P.C.B.	1	(RTL)E.S.D.
		10	VMG1985	LENS DAMPER RUBBER	1	
		11	VYK6D83	FRONT CASE UNIT	1	(-K)
		11	VYK6D79	FRONT CASE UNIT	1	(-R)
		11	VYK6D90	FRONT CASE UNIT	1	(-A)
		11	VYK6D87	FRONT CASE UNIT	1	(-S)
		12	VGQ1J97	FRONT ORNAMENT RING	1	
		13	VGQ1J98	FLARE CUT PIECE	1	
		14	VGQ1K01	MIC COVER	1	(-K)
		14	VGQ1K03-M	MIC COVER	1	(-R)
		14	VGQ1B52	MIC COVER	1	(-A)
		14	VGQ1K02	MIC COVER	1	(-S)
		15	VGQ1B59	MIC SPONGE-F	1	
		16	VGQ1B58	MIC SPONGE-M	1	
		17	VGQ1B57	MIC SPONGE-R	1	
		18	L0CBAY000164	MICROPHONE UNIT	1	
		19	VGQ1K04	LED LIGHT PIECE	1	
		20	VYK5J70	BR FRAME UNIT	1	
		21	VXD0662	LCD HINGE UNIT	1	(-K)
		22	VYK6D63	REAR COVER UNIT	1	
		23	VYK6H50	SD DOOR UNIT	1	
		24	VKM0E66	LCD CASE (T)	1	(-K)
		24	VKM0E70	LCD CASE (T)	1	(-R)
		24	VKM0E68	LCD CASE (T)	1	(-A)
		24	VKM0E67	LCD CASE (T)	1	(-S)
		25	VEP26361A	MONITOR P.C.B.	1	
		26	VMP0E87	LCD FRAME (A)	1	
		27	VGL1333	REFLECTION SHEET	1	
		28	LSGL1526	LIGHT GUIDE PANEL	1	
		29	VGL1383	DIFFUSION SHEET	1	
		30	VGL1427	PRISM SHEET (B)	1	
		31	VGL1429	PRISM SHEET (A)	1	
		32	VGQ0T54	LGP HOLDER	1	
		33	L5BDDYY00077	LCD	1	
		34	VMP0E43	LCD FRAME (B)	1	
		35	KORE00600023	LCD CASE (W/PANEL SW)	1	
		36	KORE00600022	TOP OPERATION UNIT	1	
		37	VGU0L58	SS BUTTON	1	
		38	VMP0F72	REAR EARTH ANGLE	1	
		39	VEP01A79A	BATT. CATCHER P.C.B.	1	(RTL)E.S.D.
		40	VMP0C39	CATCHER ANGLE	1	
		41	VGU0L56	SS LEVER	1	
		42	VGU0L59	SR OP BUTTON	1	
		43	L0AA01A00099	SPEAKER	1	
		44	VGU0J15	BATT LOCK LEVER	1	
		45	VMB4482	BATT LOCK SPRING	1	
		46	VMG1987	LCD CUSHION	1	
		47	VMG1822	LCD CUSHION	1	
		48	VMG1822	LCD CUSHION	1	
		49	VMG1925	DAMPER RUBBER	1	

Model No. : HC-V110 Parts List

Change	Safety	Ref. No.	Part No.	Part Name & Description	Q'ty	Remarks
		50	VEE1L14	BATT. CATCHER WIRE	1	
		51	VYK6D80	BARRIER UNIT	1	
		52	VYK6D82	SIDE CASE-R UNIT	1	(-K)
		52	VYK6D78	SIDE CASE-R UNIT	1	(-R)
		52	VYK6D89	SIDE CASE-R UNIT	1	(-A)
		52	VYK6D86	SIDE CASE-R UNIT	1	(-S)
		B1	XQN16+BJ6FJK	SCREW	1	
		B2	XQN16+BJ6FJK	SCREW	1	
		B3	XQN16+BJ6FJK	SCREW	1	
		B4	XQN16+B4FJK	SCREW	1	
		B5	XQN16+B4FJK	SCREW	1	
		B6	XQN16+B4FJK	SCREW	1	
		B7	XQN16+B6FJK	SCREW	1	(-K, -H)
		B7	XQN16+B6FN	SCREW	1	(-W)
		B8	XQN16+B6FJK	SCREW	1	(-K, -H)
		B8	XQN16+B6FN	SCREW	1	(-W)
		B9	XQN16+B4FJK	SCREW	1	
		B10	XQN16+B4FJK	SCREW	1	
		B11	XQN16+BJ4FN	SCREW	1	
		B12	VHD1919	SCREW	1	
		B13	VHD1919	SCREW	1	
		B14	VHD1919	SCREW	1	
		B15	XQN16+BJ4FN	SCREW	1	
		B16	VHD1919	SCREW	1	
		B17	VHD1919	SCREW	1	
		B20	XQN14+BJ6FN	SCREW	1	
		B21	XQN14+BJ6FN	SCREW	1	
		B22	XQN14+BJ6FN	SCREW	1	
		B23	XQN14+BJ6FN	SCREW	1	
		B24	XQN14+BJ4FJK	SCREW	1	
		B25	VHD1688	SCREW	1	
		B26	VHD1688	SCREW	1	
		B27	XQN14+BJ25FN	SCREW	1	
		B28	XQN14+BJ25FN	SCREW	1	
		B29	VHD1411	SCREW	1	
		B30	VHD1411	SCREW	1	
		B31	XQN16+B4FJK	SCREW	1	
		B32	VHD2308	SCREW	1	
		201	VXW1583	LENS UNIT	1	
		202	VXQ2339	MOS UNIT	1	
		203	VMX4008	MOS CUSHION	1	
		204	VDL2992	IR CUT GLASS	1	
		205	L6HA66NC0020	2ND STEPPING MOTOR	1	
		206	L6HAYYYB0005	FOCUS MOTOR	1	
		B201	LSHD0136	SCREW	1	
		B202	LSHD0136	SCREW	1	
		B203	LSHD0136	SCREW	1	
		B204	VHD2398	SCREW	1	
		B205	VHD2398	SCREW	1	
		B206	VHD2398	SCREW	1	
		B207	VHD2398	SCREW	1	
	⚠	301	VFF1154	CD-ROM(O/I)	1	P, PC, PU
	⚠	301	VFF1156	CD-ROM(O/I)	1	EE, GA, GC, GN, GW
	⚠	301	VFF1155	CD-ROM(O/I)	1	EB, EC, EF, EG, EP
	⚠	301	VFF1157	CD-ROM(O/I)	1	GK
		302	VPF1294	BAG, POLYETHYLENE	1	
	⚠	303	VQT4T49	OPERATING INSTRUCTIONS (ENGLISH)	1	P, PC, PU
	⚠	303	VQT4T50	OPERATING INSTRUCTIONS (CANADIAN FRENCH)	1	PC
	⚠	303	VQT4T51	OPERATING INSTRUCTIONS (SPANISH)	1	PU
	⚠	303	VQT4T58	OPERATING INSTRUCTIONS (RUSSIAN/UKRAINIAN)	1	EE

Model No. : HC-V110 Parts List

Change	Safety	Ref. No.	Part No.	Part Name & Description	Q'ty	Remarks
		303	VQT4T56	OPERATING INSTRUCTIONS (ENGLISH)	1	EB, EP
		303	VQT4T54	OPERATING INSTRUCTIONS (SPANISH/POR TUGUESE)	1	EC
		303	VQT4T55	OPERATING INSTRUCTIONS (SWEDISH/DAN ISH/FINNISH)	1	EC
		303	VQT4T53	OPERATING INSTRUCTIONS (FRENCH)	1	EF, EG
		303	VQT4T52	OPERATING INSTRUCTIONS (GERMAN/TURK ISH/ITALIAN/DUTCH)	1	EG
		303	VQT4T57	OPERATING INSTRUCTIONS (POLISH/CZEC H/HUNGARIAN)	1	EP
		303	VQT4T59	OPERATING INSTRUCTIONS (ENGLISH)	1	GA, GC, GN, GW
		303	VQT4T60	OPERATING INSTRUCTIONS (CHINESE (TRA DITIONAL) /ARABIC)	1	GA, GC, GW
		303	VQT4T61	OPERATING INSTRUCTIONS (THAI/PERSIA N/HINDI)	1	GA, GC, GW
		303	VQT4T62	OPERATING INSTRUCTIONS (CHINESE (SIM PLIFIED))	1	GK
		304	K2KYYYY00223	A/V CABLE	1	P, PC, EE, EB, EC, EF, EG, EP, GK, GN, GW
		305	K2KYYYY00225	USB CABLE	1	
		306	---	BATTERY PACK	1	
		307	VFF1109-S	CD-ROM	1	P, PC, PU, EE, EB, EC, EF, EG, EP, GA, GC, GN, GW
		307	VFF1110-S	CD-ROM	1	GK
		308	VSK0784F	AC ADAPTOR	1	P, PC, PU
		308	VSK0784G	AC ADAPTOR	1	EE, EC, EF, EG, EP, GA, GW
		308	VSK0784H	AC ADAPTOR	1	EB, GC
		308	VSK0784KA	AC ADAPTOR	1	GK
		308	VSK0784J	AC ADAPTOR	1	GN
		309	K1HY19YY0021	HDMI MINI CABLE	1	PU, GA, GC
		310	VPF1388	PROTECT BAG	1	
		311	VPG3N39	PACKING CASE	1	P, PC, EE, EB, EC, EF, EG, EP, GN, GW
		311	VYQ8380	PACKING CASE UNIT	1	P-R
		311	VYQ8381	PACKING CASE UNIT	1	P-A
		311	VYQ8394	PACKING CASE UNIT	1	PU-K
		311	VYQ8387	PACKING CASE UNIT	1	PU-R
		311	VYQ8382	PACKING CASE UNIT	1	EE-R, EB-R
		311	VYQ8383	PACKING CASE UNIT	1	EE-S, EG-S, EP-S
		311	VYQ8663	PACKING CASE UNIT	1	GA-R
		311	VYQ8664	PACKING CASE UNIT	1	GA-S
		311	VYQ8385	PACKING CASE UNIT	1	GC-R
		311	VYQ8386	PACKING CASE UNIT	1	GC-S
		311	VYQ8395	PACKING CASE UNIT	1	GW-K
		311	VPG3N41	PACKING CASE	1	PU, GA, GC
		311	VPG3N40	PACKING CASE	1	GK
		312	VPN7361	PAD	1	
		313	LSMF0623	PROTECT SHEET	1	
		314	VQL2W28	COLOR LABEL	1	GK-S